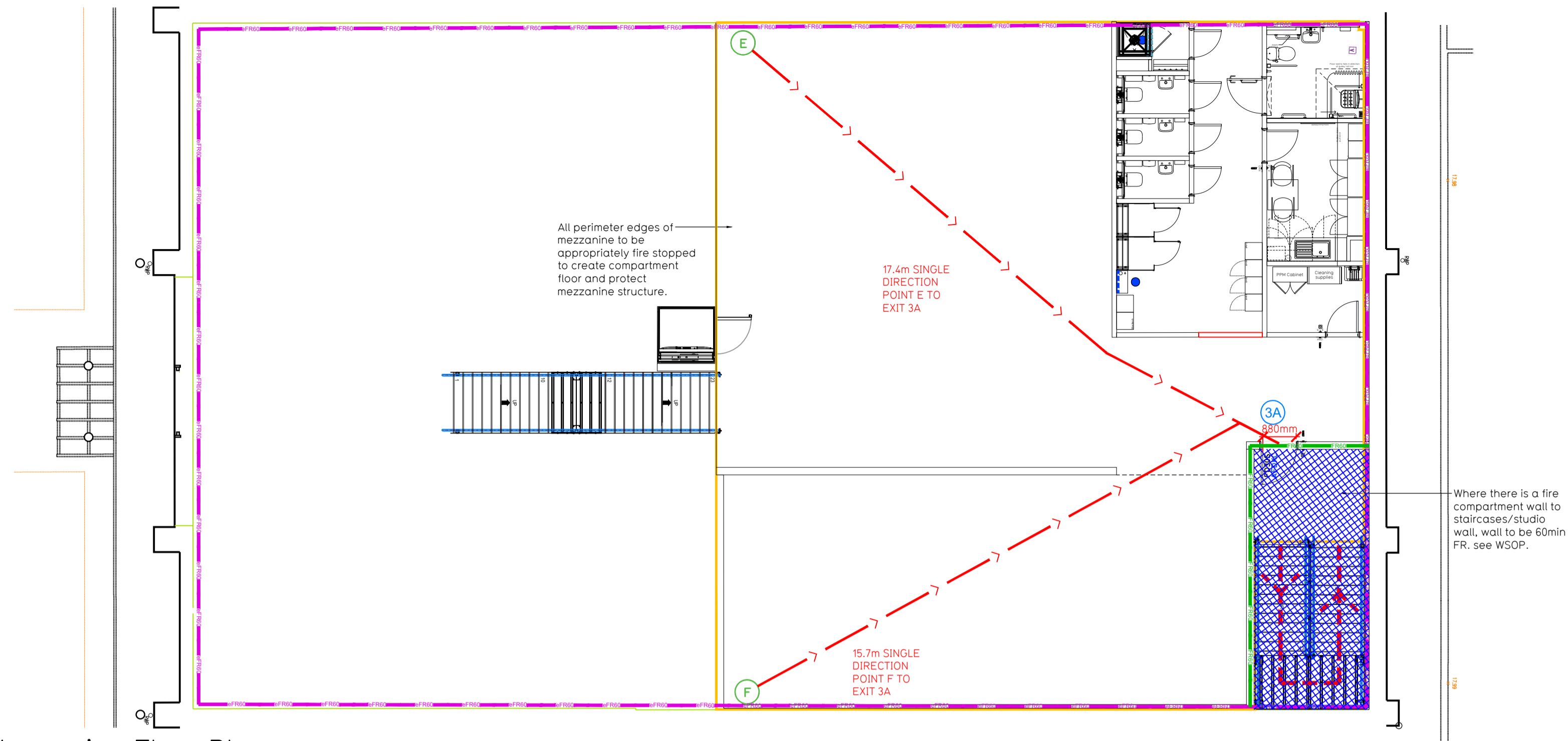
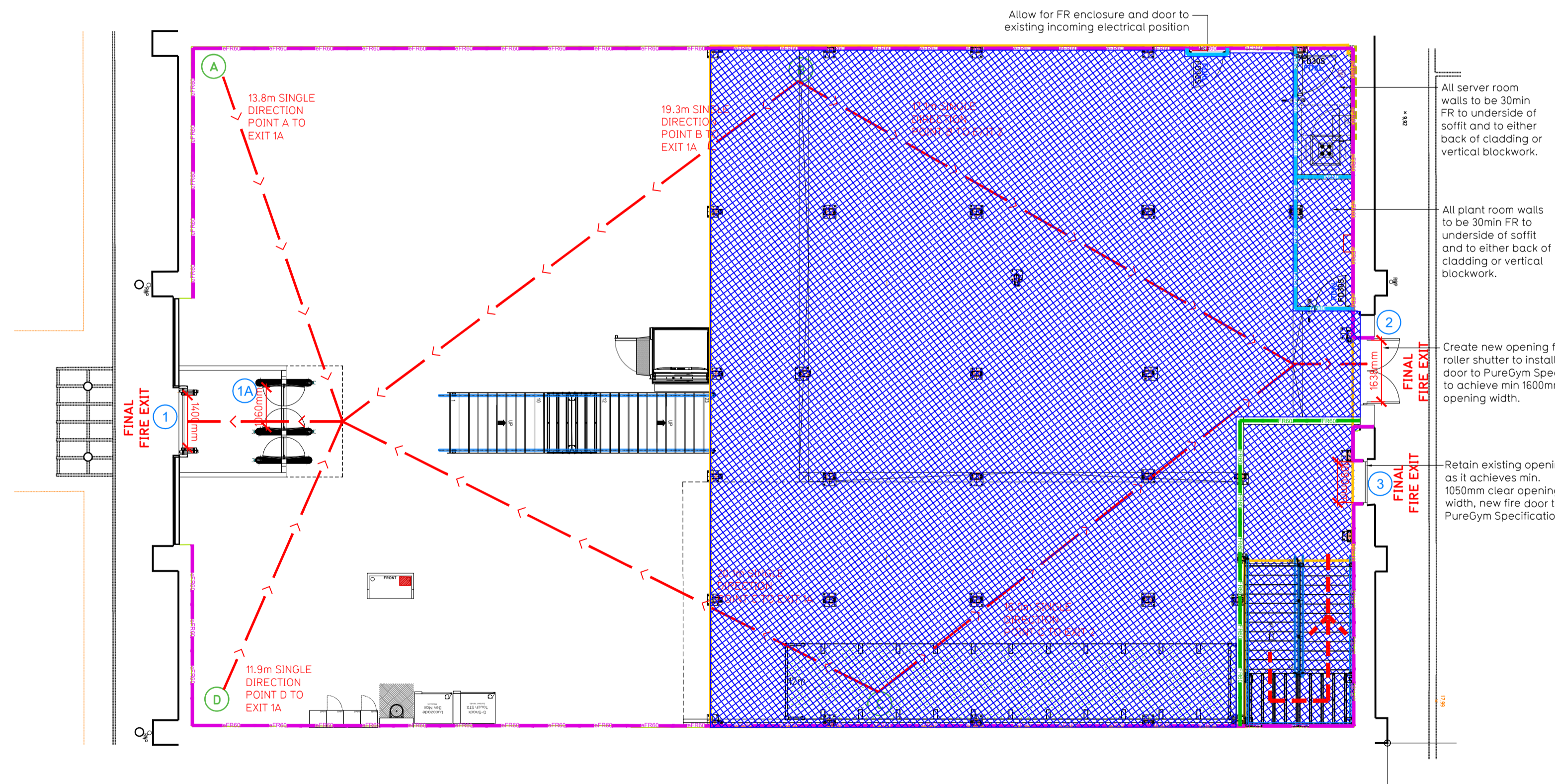


- NOTE:
- Proposals must comply with all acoustic, fire & building regulation requirements
 - No dimensions are to be scaled from this drawing. The contractor is responsible for checking all dimensions on site



Proposed Mezzanine Floor Plan



Proposed Ground Floor Plan

Fire Evacuation Key

| | | | |
|--|--|--|--|
| | Existing wall to achieve min 30 minute fire rating (suitability of wall to be confirmed on site by Pure Gym Main Contractor) | | Fire Escape Route |
| | Existing wall to achieve min 60 minute fire rating (suitability of wall to be confirmed on site by Pure Gym Main Contractor) | | Minimum Clear Widths |
| | New wall to achieve min of 30min fire rating | | Exit No. |
| | New wall to achieve min of 60min fire rating | | Shared Escape Route |
| | Protected areas: walls, floors, ceilings and doors to achieve 30minute fire resistant construction. | | Fire Door Rating - 30min. / 60min. |
| | Protected areas: walls, floors, ceilings and doors to achieve 60 minute fire resistant construction. | | Fire Door Signage - Fire Door Keep Shut / Automatic Fire Door Keep Clear / Fire Door Keep Locked |

Escape Route Widths:
In line with Sections 3.21 & 3.22 of Approved Document Part B, Volume 2 - buildings other than dwellings - the adjacent calculations provide justification for the clear opening widths for escape from each floor level room in accordance with Table 4 & Appendix C.

Ground Floor:
Exit 1 is led by Exit 1A Clear Opening Width = 1050mm (allows 222 persons to escape)
Exit 2 Clear Opening Width = 1638mm (allows 337 persons to escape, largest opening to be discounted)
Total Aggregate Width for Floor (Less Largest Opening Width of 1638mm from 2 = 1050mm)
Ground Floor Total Estimated Occupancy Capacity = 222 Persons

Mezzanine Floor:
Exit 3 is led by Exit 3A Clear Opening Width = 880mm (allows 110 persons to escape). Due to a single protected escape this floor is limited to 60 persons
First Floor Total Estimated Occupancy Capacity = 60 Persons

Total: 282 Persons

Based on NIA of 8765sqft, the PureGym max peak occupancy = 100 persons
Calculated using Puregym Fire Safety Occupancy Levels Forecast Tool.

The designed occupancy of the unit as calculated would allow a max. No. of 282 persons, which is larger than the total estimated occupancy target of 100 persons and is therefore, thought to meet with the Approved Document Part B.

Fire Alarm
Fire Alarm designed and installed to BS 5839. Smoke & heat detection / emergency lighting by specialist. Please refer to M&E engineer's drawings / specifications.

Escape Lighting
Emergency escape lighted designed and installed in accordance with BS 5266:Part 1. Please refer to M&E Engineer's drawings for final layout and specification.

Fire Stopping
All perimeter edges of mezzanine to be appropriately fire stopped to create compartment floor and protect mezzanine structure. All services/drainage penetrations passing through fire rated compartment floor to be fire colored/sealed.
Escape Signage and emergency lighting is CDP under the M&E specification. Details of contractors proposals to be provided to Building Control Approved Inspector and Fire Officer within the Contractors Proposals Package, Clause 14.

| Rev | Date | Description | Drawn/Checked |
|-----|------|-------------|---------------|
| | | | |

PROJECT TITLE: Frome Wessex Fields Retail, Handmaker Rd, BA11 4RW
DRAWING TITLE: Fire Evacuation Plan Ground and Mezzanine Floor Plan
DRAWN / CHECKED: KMC/CS
DATE: 20.09.24
DRAWING NO: 2495-XX-003-FEP-C00
DRAWING PURPOSE: CONSTRUCTION
SCALE: 1:100 @ A1

Pure Gym Ltd
Town Centre House
The Merston Centre
Leeds
LS2 8LY
e: architecture@puregym.com
w: www.puregym.com