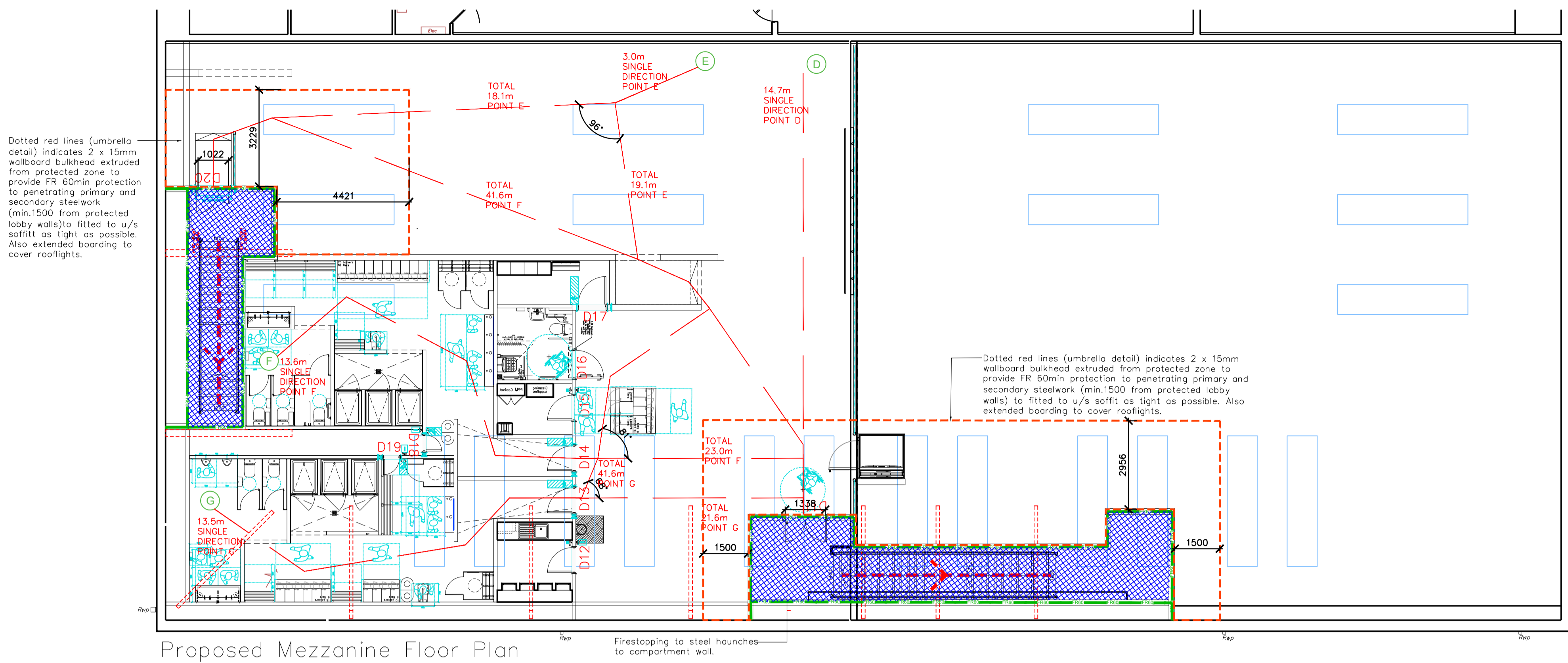
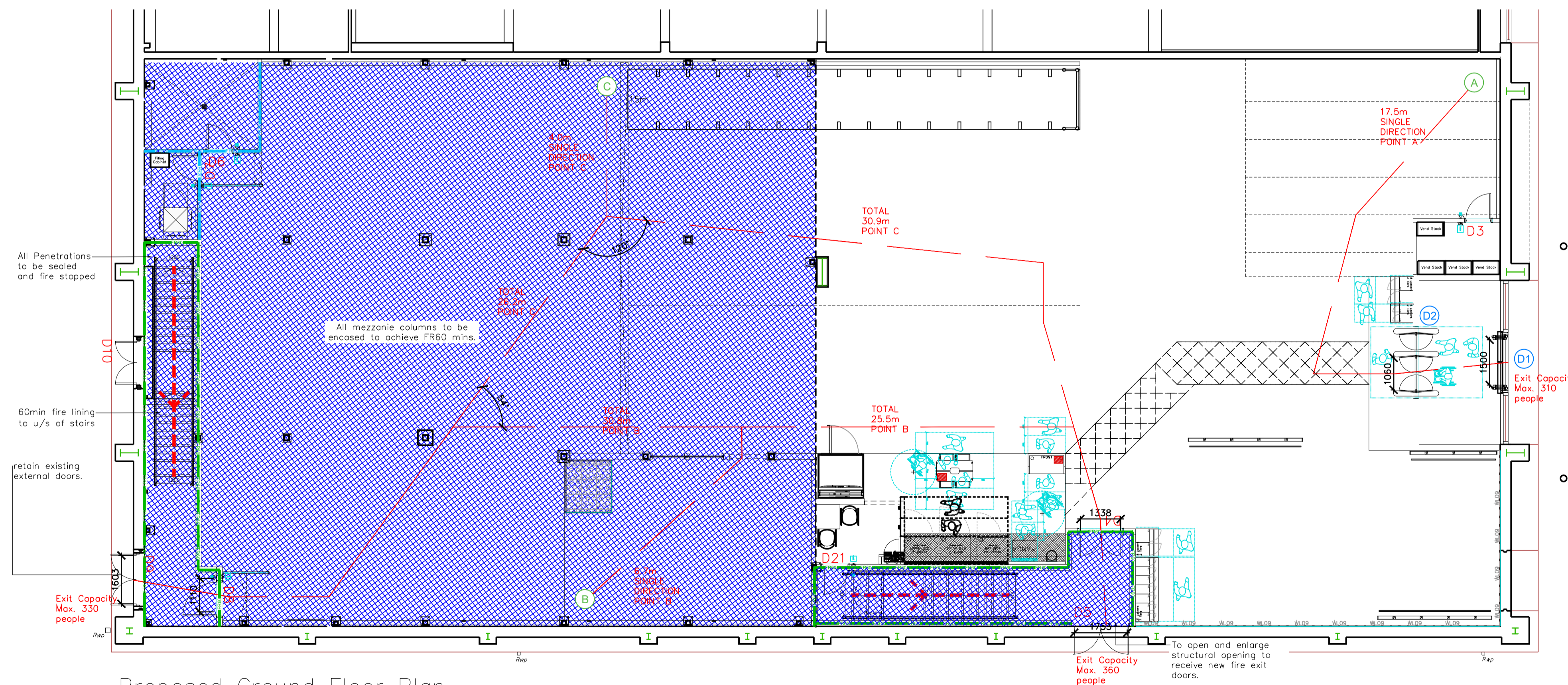


- NOTE:
- Proposals must comply with all acoustic, fire & building regulation requirements
 - No dimensions are to be scaled from this drawing. The contractor is responsible for checking all dimensions on site



Proposed Mezzanine Floor Plan



Proposed Ground Floor Plan

Fire Evacuation Key

	Existing wall to achieve min 30 minute fire rating (suitability of wall to be confirmed on site by Pure Gym Main Contractor)		Fire Escape Route
	Existing wall to achieve min 60 minute fire rating (suitability of wall to be confirmed on site by Pure Gym Main Contractor)		Exit No.
	New wall to achieve min of 30min fire rating		Shared Escape Route
	New wall to achieve min of 60min fire rating		Fire Door Rating
	Protected areas: walls, floors, ceilings and doors to achieve 30minute fire resistant construction.		
	Protected areas: walls, floors, ceilings and doors to achieve 60 minute fire resistant construction.		

Escape Route Widths:
 In line with Sections 3.21 & 3.22 of 'Approved Document Part B, Volume 2 - buildings other than dwellings' - the adjacent calculations provide justification for the clear opening widths for escape from each floor level/ room in accordance with Table 4 & Appendix C.

Ground Floor
 Final Exit D1 is led by Exit D2 Clear Opening Width = 1080mm (allows 222 persons to escape)
 Final Exit D3 is led by Exit D4 Clear Opening Width = 1338mm (allows 278 persons to escape)
 Final Exit D9 is led by Exit D8 Clear Opening Width = 1110mm (allows 232 persons to escape, largest opening to be discounted)

Total Aggregate Width for Ground Floor (Less Largest Opening Width of 1338 mm from EXIT D4) = 2170mm. Ground Floor Total Estimated Occupancy Capacity = 454 Persons

Mezzanine Floor
 Final Exit D5 is led by Storey Exit D11 Clear Opening Width = 1338mm (allows 278 persons to escape, largest opening to be discounted)
 Final Exit D9 is led by Storey Exit D20 Clear Opening Width = 1022mm (allows 110 persons to escape, largest opening to be discounted)

Total Aggregate Width for Mezzanine Floor (Less Largest Opening Width of 1338mm from EXIT D11) = 1022mm. Ground Floor Total Estimated Occupancy Capacity = 110 Persons

Final Exit D21 is led by Storey Exit D11 Clear Opening Width = 1080mm (allows 222 persons to escape) which is limited by the door width of 1080mm. Final Exit D22 is led by Storey Exit D20 Clear Opening Width = 1022mm (allows 110 persons to escape, largest opening to be discounted). Final Exit D9 is led by Storey Exit D20 Clear Opening Width = 1022mm (allows 110 persons to escape, largest opening to be discounted).

Escape Lighting
 Emergency escape lighting designed and installed in accordance with BS 5266: Part 1. Please refer to M&E Engineer's drawings for final layout and specification.

Fire Stopping
 All perimeter edges of mezzanine to be appropriately fire stopped to create compartment floor and protect mezzanine structure. All services/drains/penetrations passing through fire rated compartment floor to be fire colored/sealed.

Mezzanine
 Mezzanine Design, CD: New mezzanine structure including deck and column connections to be 60min FR using a boarded solution. Ceiling to be clear and flat ready to receive decoration. Service penetrations to be coordinated and suitably fire stopped. Contractor to submit proposals for design to be reviewed by building control and fire service. Escape signage and emergency lighting is CD: under the M&E specification. Details of contractor proposals to be provided to Building Control Approved Inspector and Fire Officer within the Contractors Proposals Package, Clause 1.4

Rev	Date	Description	Drawn/Checked
C02	07.02.24	Construction Pack Updates	
C01	20.11.23	Mezzanine Column Grid Updates	KMC/JM

PROJECT TITLE	DRAWING TITLE
Northfield Retail Park, NN14 9TS	Fire Evacuation Plan
	Ground and Mezzanine Floor Plans
DRAWN/DESIGNED	DATE
KMC/JM	13.10.23
DRAWING PURPOSE	SCALE
CONSTRUCTION	1:100 @ A1
	2168
	003-FEP
	Rev
	C02

PUREGYM

Pure Gym Ltd
 Town Centre House
 The Merrion Centre
 Leeds
 LS2 8LY

e: architecture@puregym.com
 t: 0113 285 8787
 w: www.puregym.com