

| DRAWING APPLICABLE TO | | | | | | | | | | | |
|-----------------------|-----|-----|-----|------|-------|----|----|----|----|----|---|
| MARKET | GP | EN | SC | NI | CH | DK | US | JP | SA | AE | - |
| FORMAT | LBF | MBF | SBF | VSBF | OTHER | | | | | | |

NOTES:

- Proposals must comply with all acoustic, fire & building regulation requirements
- No dimensions are to be scaled from this drawing. The contractor is responsible for checking all dimensions on site

- Fire Evacuation Key**
- Existing wall to achieve min 30 minute fire rating (suitability of wall to be confirmed on site by Pure Gym Main Contractor)
 - Existing wall to achieve min 60 minute fire rating (suitability of wall to be confirmed on site by Pure Gym Main Contractor)
 - Existing wall to achieve min 120 minute fire rating (suitability of wall to be confirmed on site by Pure Gym Main Contractor)
 - New wall to achieve min of 30min fire rating
 - New wall to achieve min of 60min fire rating
 - New wall to achieve min of 120min fire rating
 - Protected areas: walls, floors, ceilings and doors to achieve 30minute fire resistant construction.
 - Protected areas: walls, floors, ceilings and doors to achieve 60 minute fire resistant construction.
 - Minimum Clear Widths
 - Fire Escape Route
 - Exit No.
 - Shared Escape Route
 - Fire Door Rating - 30min. / 60min.
 - Fire Door Signage - Fire Door Keep Shut / Automatic Fire Door Keep Clear / Fire Door Keep Locked

To be read in conjunction with Intu Uxbridge Fire Strategy Summary XL3616/RT and Shell and Core Fire Strategy for Unit 1166 G18575/R2

The centre strategy has assumed a maximum occupancy of 640 occupants based on 2 people/m2 and 5mm width per person. This does not take into account any restrictions within the fit out by PG. Based on the PG Occupancy tool our expected max peak occupancy would be 198 persons.

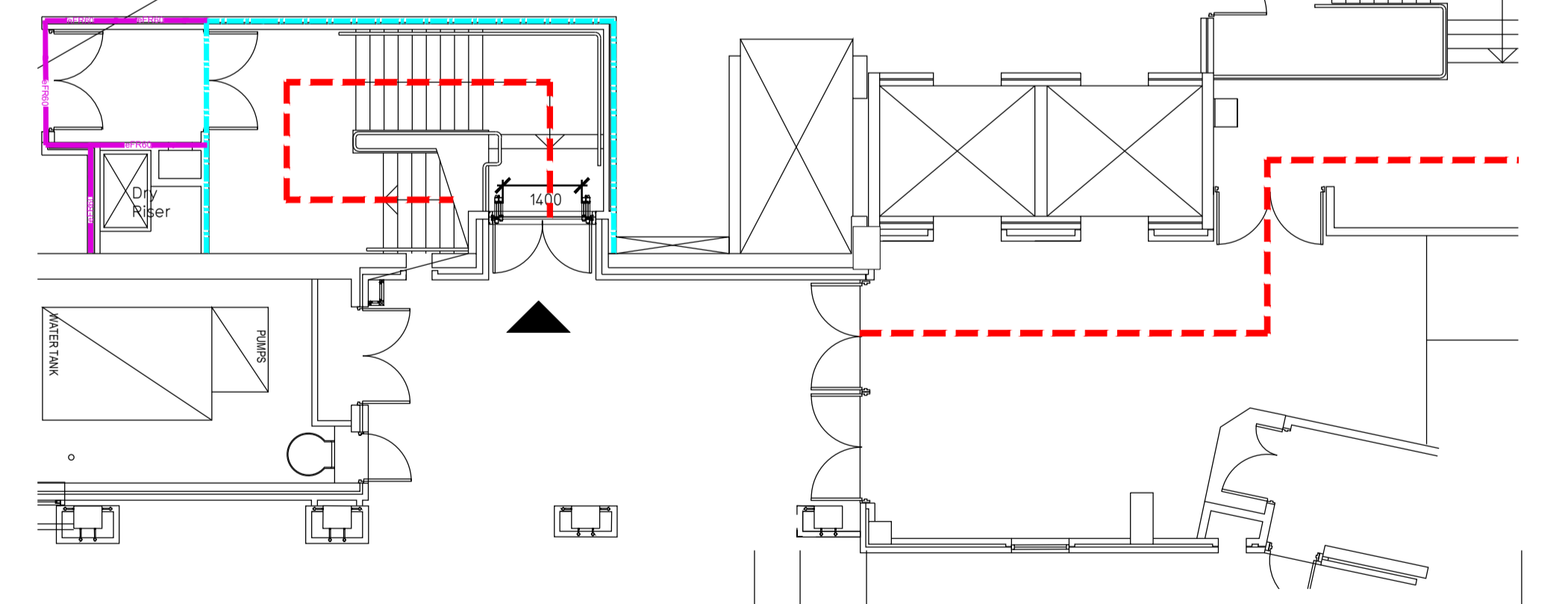
Escape Route Widths:
 In line with Sections 3.21 & 3.22 of 'Approved Document Part B, Volume 2 - buildings other than dwellings' - the adjacent calculations provide justification for the clear opening widths for escape from each floor level/ room in accordance with Table 4 & Appendix C.

Basement Floor
 Exit 01 limited by Exit D Clear Opening Width = 1060mm (allows 222 persons to escape)
 Exit 02 limited by Exit C Clear Opening Width = 1500mm (allows 310 persons to escape, largest opening to be discounted)
 Exit 03 limited by Exit A Clear Opening Width = 1338mm (allows 354 persons to escape)

Total Aggregate Width for Floor (Less Largest Opening Width of 1720mm from Exit B) = 2560mm
 Basement Floor Total Estimated Occupancy Capacity = 532 Persons

Exit 01 and 02 provides a min. width of 2560mm and would allow a max. No. of 532 persons to escape, which is larger than the total estimated occupancy capacity of 198 Persons and is therefore thought to meet with the Approved Document Part B. The LL will need to satisfy themselves on the clear width of doors within their part of the works - mainly the merging flows of different units and any final exit widths.

- Sprinklers**
 System design and installed in compliance with BS EN 12845:2015 & LPC Technical Bulletins. Sprinklers will be quick response type heads with design and installation by specialist. LL to comment to comply with any centre specific insurance requirements
- Fire Alarm**
 Fire Alarm designed and installed to BS 5839-1. Smoke & heat detection / emergency lighting by specialist. Please refer to M&E engineer's drawings / specifications.
- Escape Lighting**
 Emergency escape lighting designed and installed in accordance with BS 5266: Part 1. Exit Signage to be in accordance with BS5499: Part 1 on all common escape routes. Please refer to M&E Engineer's drawings for final layout and specification.
- Basement Smoke Control**
 Smoke Extract System to be designed and installed in accordance with BS 7346: Part 8 to achieve 10 air changes per hour. Please refer to M&E Engineer's drawings for final layout and specification.
- Fire Stopping**
 All services/drainage penetrations passing through fire rated compartment walls or floor to be fire collared/sealed and recorded.
- Escape Signage and emergency lighting is COP under the M&E specification. Details of contractors proposals to be provided to Building Control Approved Inspector and Fire Officer within the Contractors Proposals Package, Clause 1.4



Ground Floor Plan (Entrance Staircase and Lift to Basement)

Basement Floor Plan

| | | | | |
|---|----------|--|-------|------------------------|
| Rev | Date | Description | CS:PG | Drawn/ Checked |
| C01 | 13.12.24 | Accessible Shower revision, Shower updates and linings | | |
| PROJECT TITLE | | DRAWING TITLE | | |
| Uxbridge Intu Lower Mall, High St, Uxbridge UB8 1GA | | General Arrangement Basement and Ground Floor Plan | | |
| DRAWN / CHECKED | | DATE | | SCALE |
| MJJ/CS | | 21.10.2024 | | CONSTRUCTION 1:100 @A1 |
| DRAWING NO. | | | | |
| 2017-XX-003-FEP_C01 | | | | |

Pure Gym Ltd
 First Floor
 10-14 White Lion Street
 London
 N1 9PD.
 e: architecture@puregym.com
 w: www.puregym.com