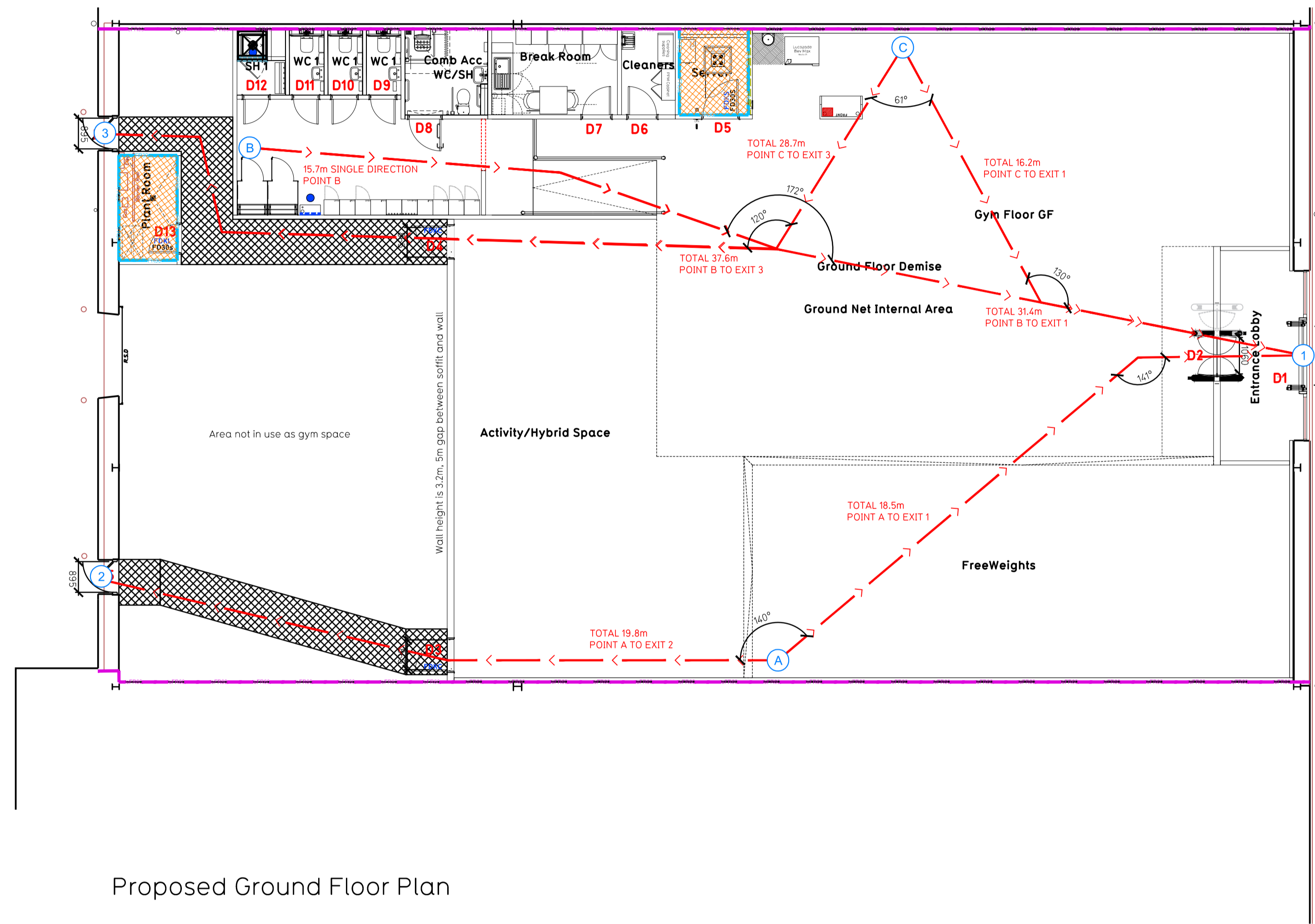


- NOTE:
- Proposals must comply with all acoustic, fire & building regulation requirements
  - No dimensions are to be scaled from this drawing. The contractor is responsible for checking all dimensions on site



Proposed Ground Floor Plan

Fire Evacuation Key

	Existing wall to achieve min 30 minute fire rating (suitability of wall to be confirmed on site by Pure Gym Main Contractor)		Fire Escape Route
	Existing wall to achieve min 60 minute fire rating (suitability of wall to be confirmed on site by Pure Gym Main Contractor)		Minimum Clear Widths
	New wall to achieve min of 30min fire rating		Exit No.
	New wall to achieve min of 60min fire rating		Shared Escape Route
	Protected areas: walls, floors, ceilings and doors to achieve 30minute fire resistant construction.		Fire Door Rating - 30min. / 60min.
	Protected areas: walls, floors, ceilings and doors to achieve 60 minute fire resistant construction.		Fire Door Signage - Fire Door Keep Shut / Automatic Fire Door Keep Clear / Fire Door Keep Locked

**Escape Route Widths:**  
In line with sections 3.21 & 3.22 of 'Approved Document Part B, Volume 2 - buildings other than dwellings' - the adjacent calculations provide justification for the clear opening widths for escape from each floor level/ room in accordance with Table 4 & Appendix C.

**Ground Floor:**  
Exit 1 Clear Opening Width = 1060mm (width dictated by Speedgate) allows 222 persons to escape, largest opening to be discounted  
Exit 2 Clear Opening Width = 865mm (width dictated by gym exit door) allows 110 persons to escape  
Exit 3 Clear Opening Width = 865mm (width dictated by gym exit door) allows 110 persons to escape  
Total Aggregate Width for Floor (Less Largest Opening Width of 1060mm from Exit 1) = 865mm

Ground Floor Total Estimated Occupancy Capacity = 100 Persons (based on Pure Gym occupancy calculator)  
Exits 2 & 3 provides a min. width of 865mm each and would allow a max. No. of 220 persons to escape (110 each exit), which is larger than the total estimated occupancy capacity of 100 persons and is therefore thought to meet with the Approved Document Part B.

**Fire Alarm:**  
Fire Alarm designed and installed to BS 5839. Smoke & heat detection / emergency lighting by specialist. Please refer to MSE engineer's drawings / specifications.

**Escape Lighting:**  
Emergency escape lighting designed and installed in accordance with BS 5266: Part 1. Please refer to MSE Engineer's drawings for final layout and specification.

**Fire Stopping:**  
All services/drainage penetrations passing through fire rated compartments to be fire collared/sealed.

Escape Signage and emergency lighting is COP under the MSE specification. Details of contractors proposals to be provided to Building Control Approved Inspector and Fire Officer within the Contractors Proposals Package, Clause 1.4

Rev	Date	Description	Drawn/Checked
PROJECT TITLE		DRAWING TITLE	
Harwich Unit 3, Gateway Retail Park, Harwich		Fire Evacuation Plan Ground Floor Plan	
DRAWN / CHECKED		DATE	SCALE
MJJTH/MB		25.11.24	CONSTRUCTION 1:100 @ A1
DRAWING NO. 2496-GF-003-FEP-C00			
		Pure Gym Ltd Town Centre House The Mursion Centre Leeds LS2 8LY e: architecture@puregym.com w: www.puregym.com	