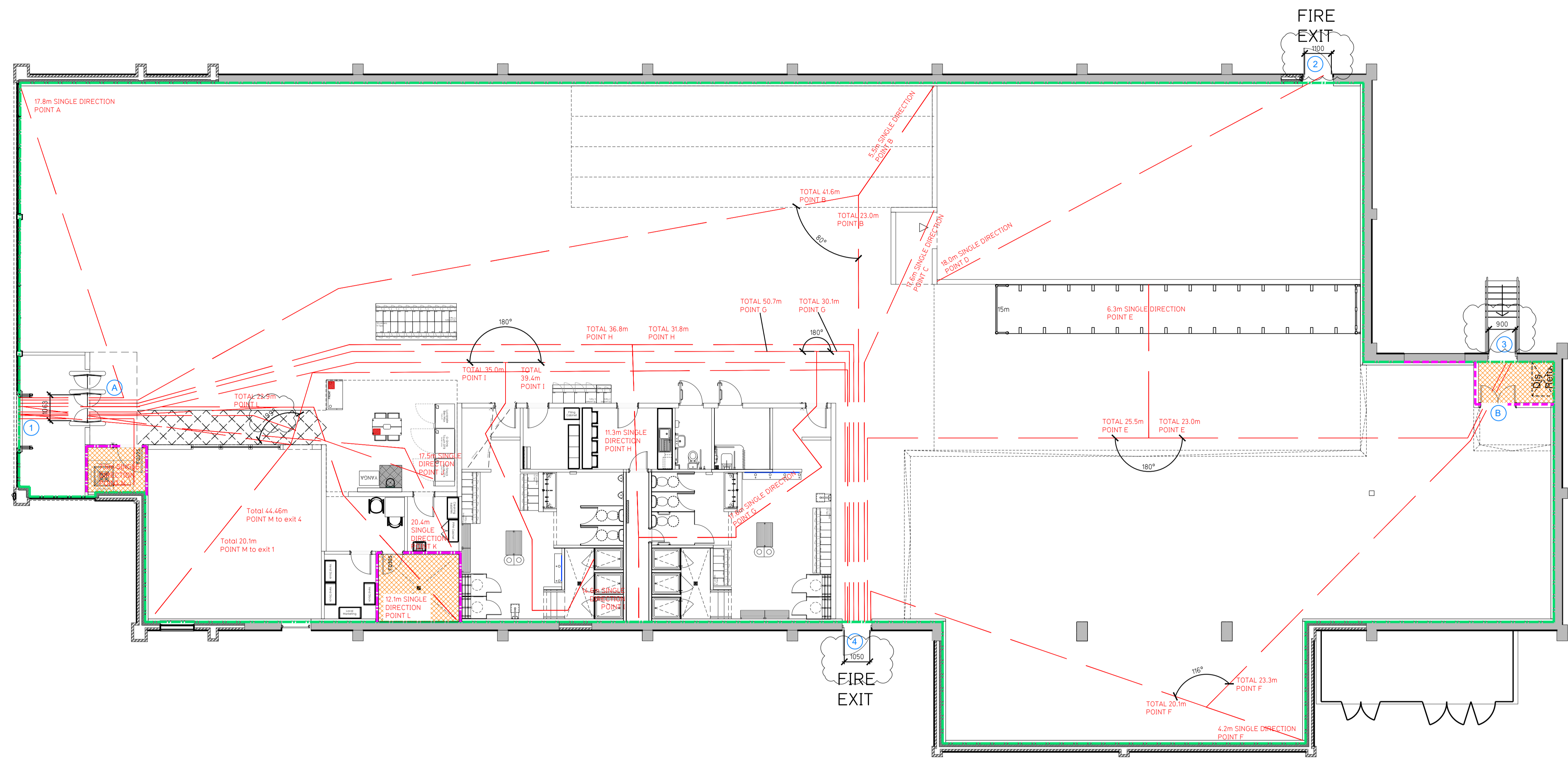


NOTE:

- Proposals must comply with all acoustic, fire & building regulation requirements
- No dimensions are to be scaled from this drawing. The contractor is responsible for checking all dimensions on site



Proposed Ground Floor Plan

Fire Evacuation Key	
	Existing wall to achieve min 30 minute fire rating (suitability of wall to be confirmed on site by Pure Gym Main Contractor)
	Existing wall to achieve min 60 minute fire rating (suitability of wall to be confirmed on site by Pure Gym Main Contractor)
	New wall to achieve min of 30min fire rating
	New wall to achieve min of 60min fire rating
	Protected areas: walls, floors, ceilings and doors to achieve 30minute fire resistant construction.
	Protected areas: walls, floors, ceilings and doors to achieve 60 minute fire resistant construction.
	Fire Escape Route
	Minimum Clear Widths
	Exit No.
	Shared Escape Route
	Fire Door Rating

Escape Route Widths:
 In line with Sections 3.21 & 3.22 of 'Approved Document Part B, Volume 2 - buildings other than dwelling houses' - the adjacent calculations provide justification for the clear opening widths for escape from each floor level/room in accordance with Table 4.4 Appendix C.

Exit 1 is restricted by A. Exit A Clear Opening Width = 1050mm (allows 222 persons to escape)
 Exit 2 Clear Opening Width = 1000mm (allows 238 persons to escape, largest opening to be discounted)
 Exit 3 Clear Opening Width = 900mm (allows 110 persons to escape)
 Exit 4 Clear Opening Width = 1050mm (allows 202 persons to escape)

Total Aggregate Width for Floor (Less Largest Opening Width of 1000mm from Exit 2) = 3070mm

Total = 602 persons to escape

Based on a NIA of 16,553 sqft, the Puregym Peak Occupancy Target = 240 Persons
 Calculated using Puregym Fire Safety Occupancy Levels Forecast Tool.
 The designed occupancy of the unit as calculated above would allow a max. No. of 602 persons to escape, which is larger than the total estimated occupancy capacity of 240 Persons and is therefore thought to meet with the Approved Document Part B.

Fire Alarm
 Fire Alarm designed and installed to BS 5839. Smoke & heat detection / emergency lighting by specialist. Please refer to M&E engineer's drawings / specifications.

Escape Lighting
 Emergency escape lighting designed and installed in accordance with BS 5266: Part 1. Please refer to M&E Engineer's drawings for final layout and specification.

Fire Stopping
 All perimeter edges of mezzanine to be appropriately fire stopped to create compartment floor and protect mezzanine structure. All services/drainage penetrations passing through fire rated compartment floor to be fire colored/sealed.

Cavity barrier in void space above ceiling to be installed at max. 2000mm; refer to RCP

Escape Signage and emergency lighting is CDP under the M&E specification. Details of contractors proposals to be provided to Building Control Approved Inspector and Fire Officer within the Contractors Proposals Package, Clause 1.4

Rev	Date	Description	Drawn / Checked

PROJECT TITLE		DRAWING TITLE	
Derby North Unit 7, Meteor Retail Park, Derby DE21 4SY		Fire Evacuation Plan Ground Floor Plan	
DATE	SCALE	ISS. No.	DRAWING No.
24.07.23	1:100 @ A1	2212	003-FEP
DRAWING PURPOSE			Rev
CONSTRUCTION			C03

PUREGYM

Pure Gym Ltd
 Town Centre House
 The Merrion Centre
 Leeds
 LS2 8LY
 e: architecture@puregym.com
 t: 0113 285 8787
 w: www.puregym.com