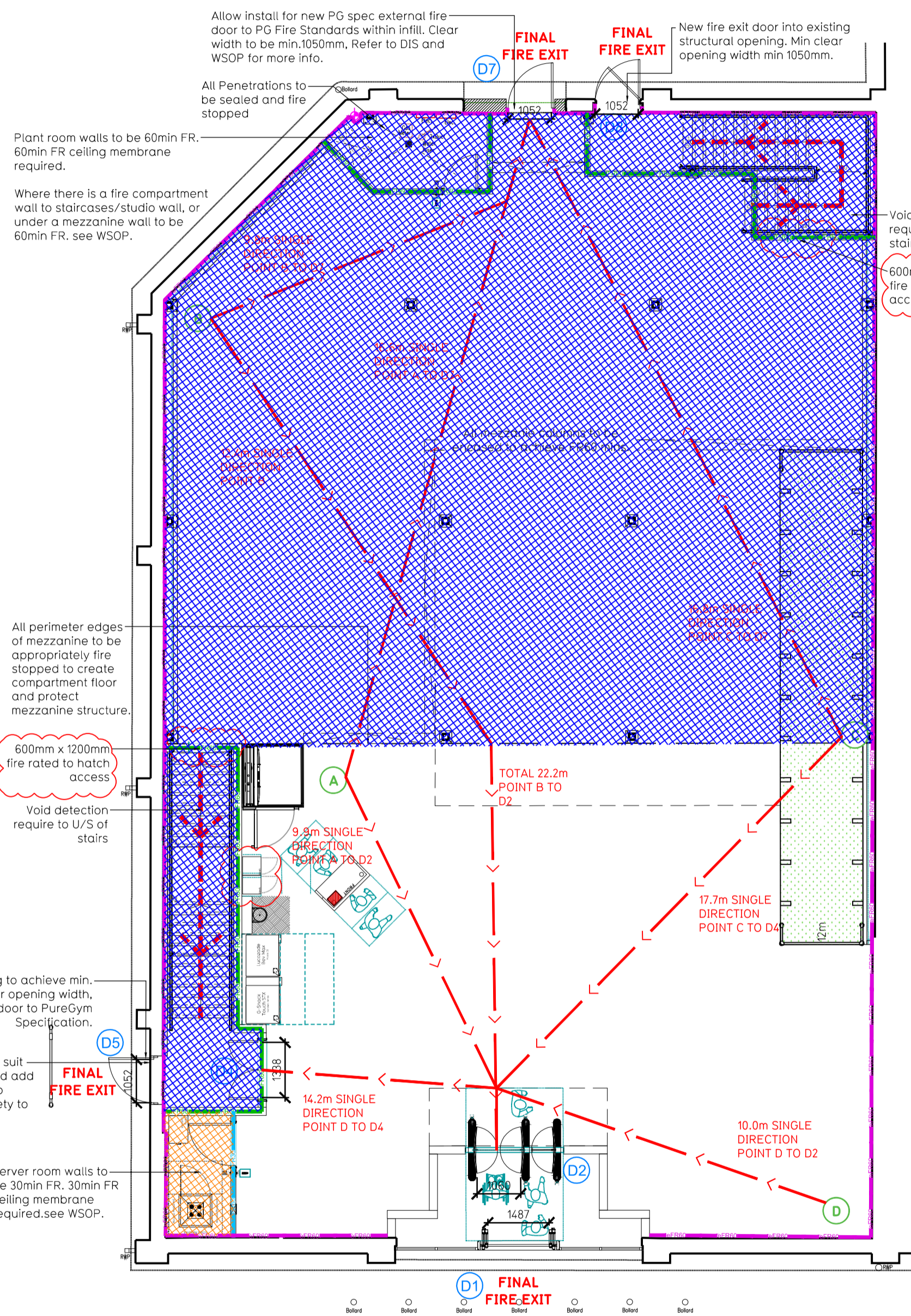
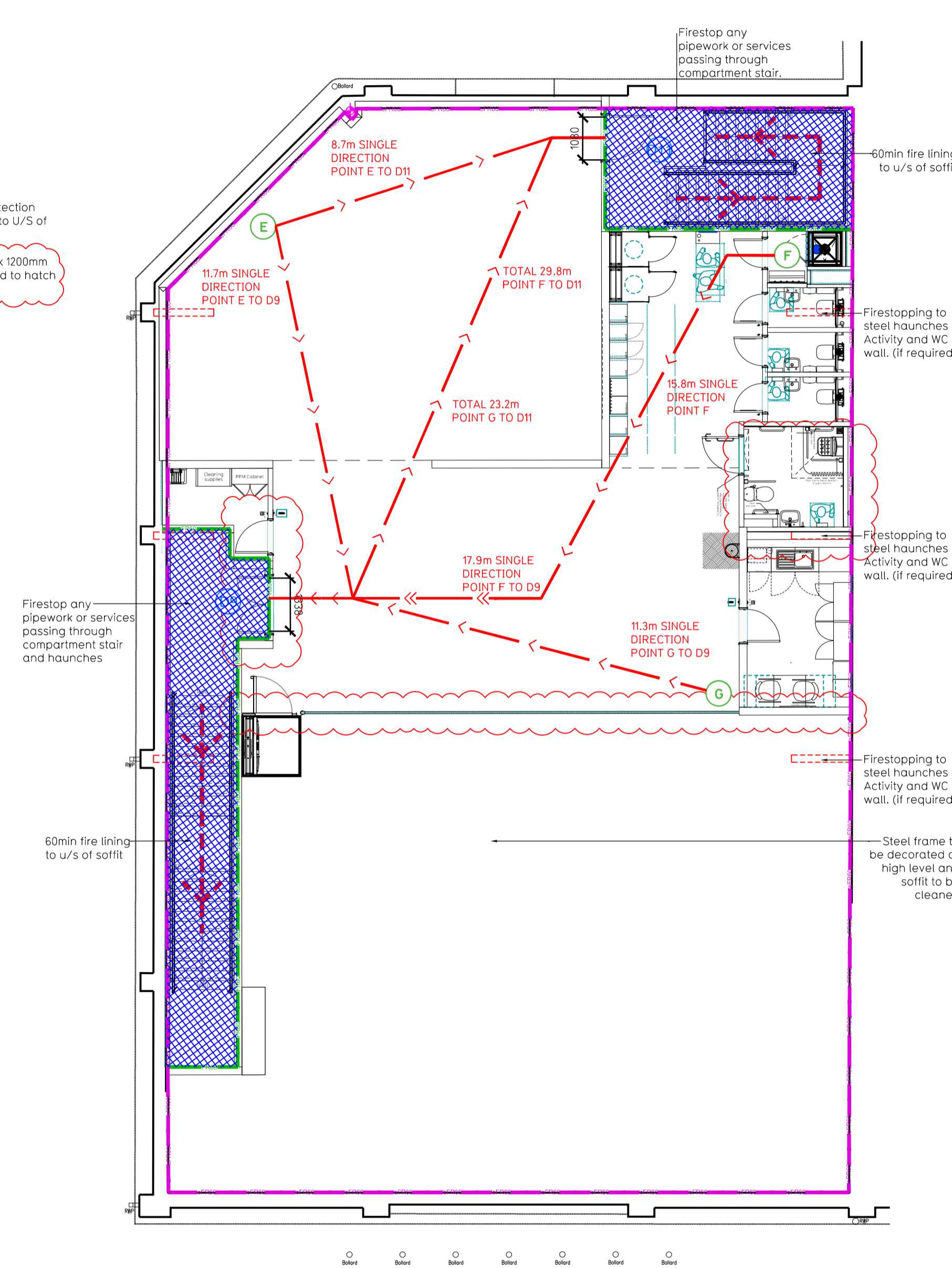


- NOTE:
- Proposals must comply with all acoustic, fire & building regulation requirements
 - No dimensions are to be scaled from this drawing. The contractor is responsible for checking all dimensions on site



Proposed Ground Floor Plan



Proposed Mezzanine Floor Plan

Fire Evacuation Key	
	Existing wall to achieve min 30 minute fire rating (suitability of wall to be confirmed on site by Pure Gym Main Contractor)
	Fire Escape Route
	Existing wall to achieve min 60 minute fire rating (suitability of wall to be confirmed on site by Pure Gym Main Contractor)
	New wall to achieve min of 30min fire rating
	New wall to achieve min of 60min fire rating
	Protected areas: walls, floors, ceilings and doors to achieve 30minute fire resistant construction.
	Protected areas: walls, floors, ceilings and doors to achieve 60 minute fire resistant construction.
	Minimum Clear Widths
	Exit No.
	Shared Escape Route
	Fire Door Rating - 30min. / 60min.
	Fire Door Signage - Fire Door Keep Shut / Automatic Fire Door Keep Clear / Fire Door Keep Locked

Escape Route Widths:
In line with Sections 3.21 & 3.22 of Approved Document Part B, Volume 2 - buildings other than dwellings - the adjacent calculations provide justification for the clear opening widths for escape from each floor level room in accordance with Table 4.4 & Appendix C.

Ground Floor:
Exit D1 is fed by Exit D2 Clear Opening Width = 1060mm (allows 222 persons to escape)
Exit D5 is fed by Exit D4 Clear Opening Width = 1320mm (allows 276 persons to escape, largest opening to be discounted)
Exit D7 Clear Opening Width = 1050mm (allows 210 persons to escape)

Total Aggregate Width for Floor (Less Largest Opening Width of 1338mm from D4 = 2112mm)
Ground Floor Total Estimated Occupancy Capacity = 442 Persons

Mezzanine Floor:
Exit D8 is fed by Exit D9 Clear Opening Width = 1330mm (allows 276 persons to escape, largest opening to be discounted)
Exit D8 is fed by Exit D11 Clear Opening Width = 1080mm (allows 220 persons to escape)

Total Aggregate Width for Floor (Less Largest Opening Width of 1338mm from D9 = 1080mm)
Mezzanine Floor Total Estimated Occupancy Capacity = 226 Persons

Total: 668 Persons
Based on IMA of 695/sqft, the PureGym max peak occupancy = 100 persons. Calculated using PureGym Fire Safety Occupancy Levels Forecast Tool. The designed occupancy of the unit as calculated would allow a max. No. of 668 persons, which is larger than the total estimated occupancy target of 100 persons and is therefore, thought to meet with the Approved Document Part B.

Fire Alarm
Fire Alarm designed and installed to BS 5839. Smoke & heat detection / emergency lighting by specialist. Please refer to M&E engineer's drawings & specifications.

Escape Lighting
Emergency escape lighted designed and installed in accordance with BS 5266: Part 1. Please refer to M&E Engineer's drawings for final layout and specification.

Fire Stopping
All perimeter edges of mezzanine to be appropriately fire stopped to create compartment floor and protect mezzanine structure. All services/drainage penetrations passing through fire rated compartment floor to be fire coated/sealed.
Escape Signage and emergency lighting is OIP under the M&E specification. Details of contractors proposals to be provided to Building Control Approved Inspector and Fire Officer within the Contractors Proposals Package, Clause 14

Rev	Date	Description	Drawn/Checked
C01	09.01.25	Amendments ACC WC and mezz edge.	JM/PG
PROJECT TITLE		DRAWING TITLE	
Market Harborough Unit 2, Rockingham Industrial Estate, LE16 7QE		Fire Evacuation Plan Ground and Mezzanine Floor Plan	
DRAWN / CHECKED		SCALE	
KMC/JM		1:100 @ A1	
DATE		CONSTRUCTION	
15.11.24			
2504-XX-003-FEP-C01			
		Pure Gym Ltd Town Centre House The Mursion Centre Leeds LS2 8LY e: architecture@puregym.com w: www.puregym.com	