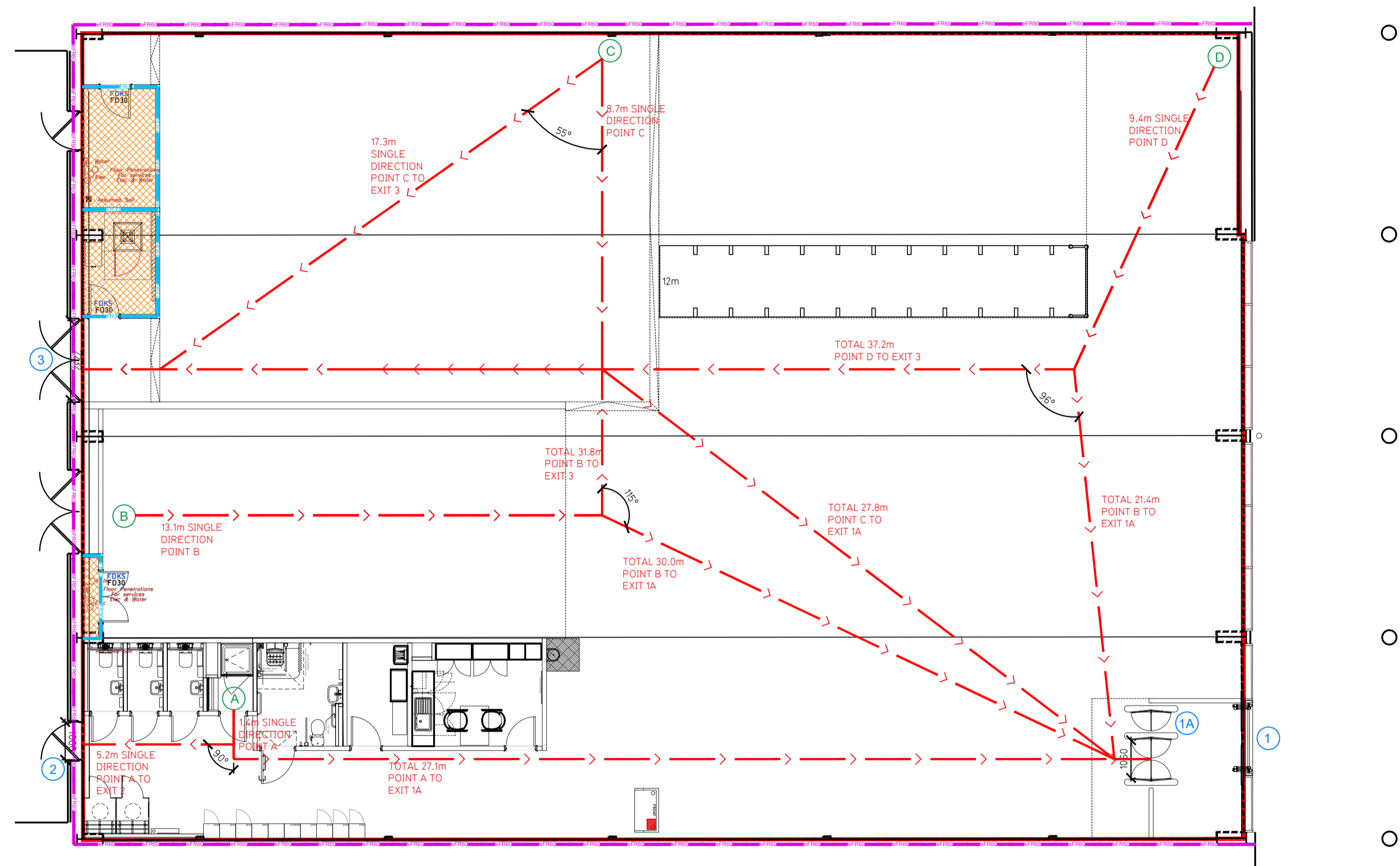


- NOTE:
- Proposals must comply with all acoustic, fire & building regulation requirements
  - No dimensions are to be scaled from this drawing. The contractor is responsible for checking all dimensions on site



Proposed Ground Floor Plan

Fire Evacuation Key

	Existing wall to achieve min 30 minute fire rating (suitability of wall to be confirmed on site by Pure Gym Main Contractor)		Fire Escape Route
	Existing wall to achieve min 60 minute fire rating (suitability of wall to be confirmed on site by Pure Gym Main Contractor)		Minimum Clear Widths
	New wall to achieve min of 30min fire rating		Exit No.
	New wall to achieve min of 60min fire rating		Shared Escape Route
	Protected areas: walls, floors, ceilings and doors to achieve 30minute fire resistant construction.		Fire Door Rating - 30min. / 60min.
	Protected areas: walls, floors, ceilings and doors to achieve 60 minute fire resistant construction.		Fire Door Signage - Fire Door Keep Shut / Automatic Fire Door Keep Clear / Fire Door Keep Locked

**Escape Route Widths:**  
In line with Sections 3.21 & 3.22 of 'Approved Document Part B, Volume 2 - buildings other than dwellings' - the adjacent calculations provide justification for the clear opening widths for escape from each floor level/ room in accordance with Table 4 & Appendix C.

**Ground Floor**  
Exit 1A restricted by 1A, Exit 1A Clear Opening Width = 1060mm (allows 222 persons to escape)  
Exit 2 Clear Opening Width = 1060mm (allows 222 persons to escape)  
Exit 3 Clear Opening Width = 2232mm (allows 444 persons to escape, largest opening to be discounted)

Total Aggregate Width for Floor (Less Largest Opening Width of 2232mm from Exit 3 = 2109mm (allows 444 persons to escape)

**Total**  
Total = 444 persons to escape  
Based on a NIA of 7504.1 sqm, the Puregym Peak Occupancy Target = 100 Persons  
Calculated using Puregym Fire Safety Occupancy Levels Forecast Tool.

The designed occupancy of the unit as calculated below would allow a max. No. of 444 persons to escape, which is larger than the total estimated occupancy capacity of 100 Persons and is therefore thought to meet with the Approved Document Part B.

**Fire Alarm**  
Fire Alarm designed and installed to BS 5839. Smoke & heat detection / emergency lighting by specialist. Please refer to M&E engineer's drawings / specifications.

**Escape Lighting**  
Emergency escape lighted designed and installed in accordance with BS 5266: Part 1. Please refer to M&E Engineer's drawings for final layout and specification.

**Fire Stopping**  
All cavity walls should be appropriately sealed at the head of the cavity, if not then this is to be raised with the LL. Similarly any unprotected penetrations through the party walls or cladding when first starting on site are to be raised with the LL.

Escape Signage and emergency lighting is CDP under the M&E specification. Details of contractors proposals to be provided to Building Control Approved Inspector and Fire Officer within the Contractors Proposals Package, Clause 1.4

Rev	Date	Description	Drawn/ Checked
PROJECT TITLE		DRAWING TITLE	
Alton		Fire Evacuation Plan	
Unit 2, Mill Lane RP, Mill Lane, Alton, GU34 2QS		Ground Floor Plan	
DRAWN / CHECKED	DATE	DRAWING PURPOSE	SCALE
H/CD	22.07.24	CONSTRUCTION	1:100 @ A1
2111b-GF-003-FEP-C00			
		Pure Gym Ltd Town Centre House The Merston Centre Leeds LS2 8LY e: architecture@puregym.com w: www.puregym.com	