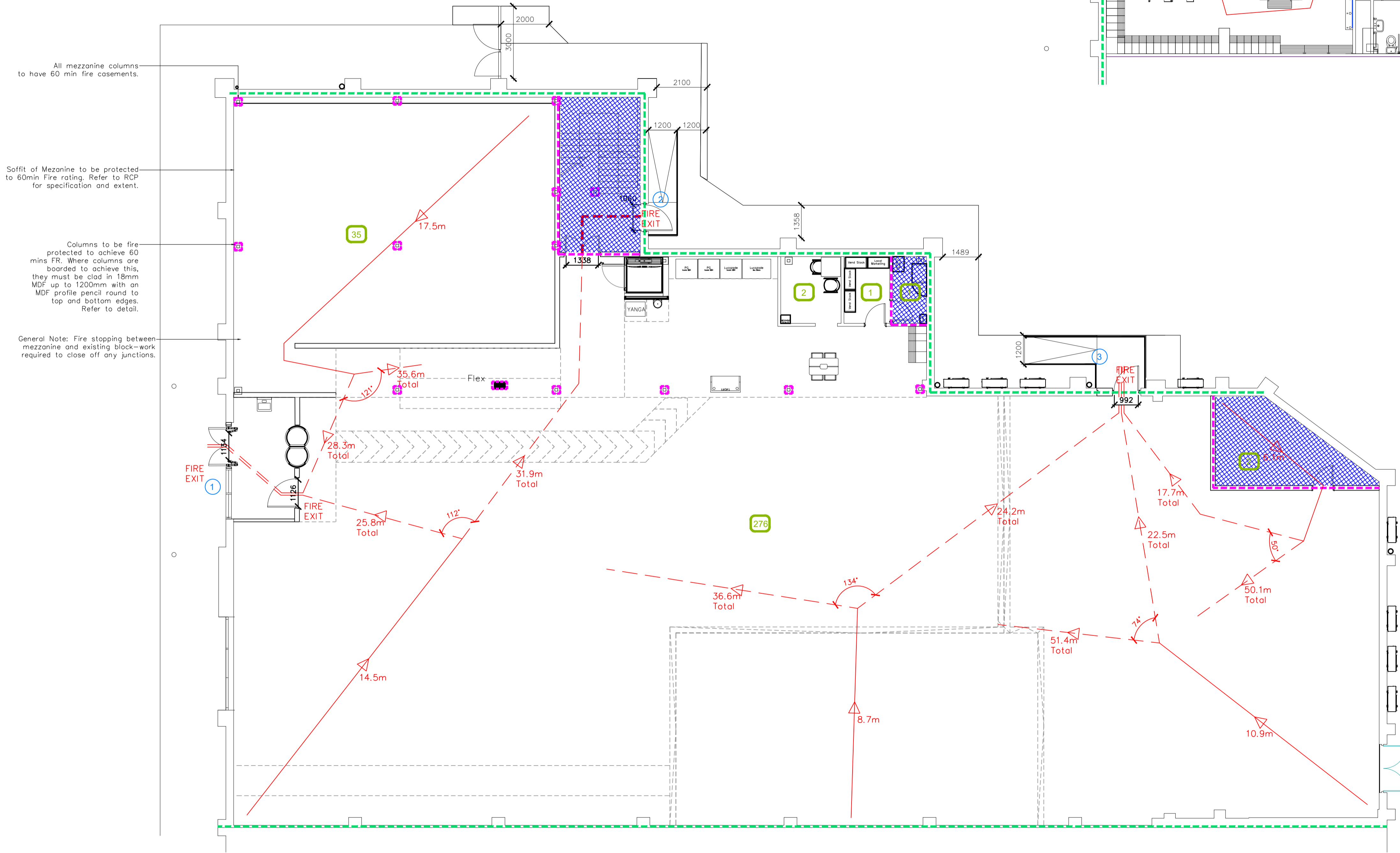
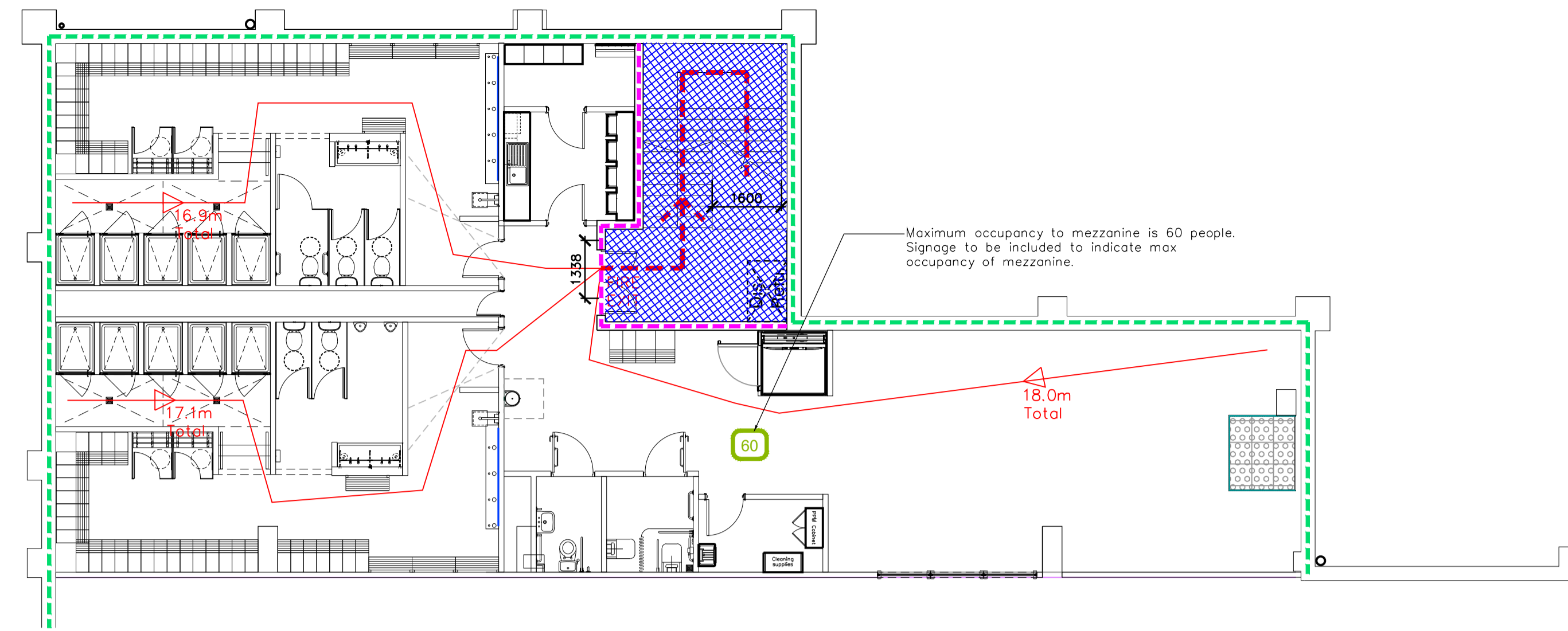


NOTE:

- Proposals must comply with all acoustic, fire & building regulation requirements
- No dimensions are to be scaled from this drawing. The contractor is responsible for checking all dimensions on site
- All proposals to be confirmed following site visit



Fire Evacuation Key

	Existing wall to achieve min 60 minute fire rating (suitability of wall to be confirmed on site by Pure Gym Main Contractor)		Occupancy level within area
	New wall to achieve min of 60min fire rating		Fire Escape Route
	Protected areas: walls, floors, ceilings and doors to achieve 30minute fire resistant construction.		Minimum Clear Widths
	Protected areas: walls, floors, ceilings and doors to achieve 60 minute fire resistant construction.		Exit No.
			Shared Escape Route

Escape Route Widths:
 In line with Sections 3.21 & 3.22 of 'Approved Document Part B, Volume 2 - buildings other than dwelling houses' - the adjacent calculations provide justification for the clear opening widths for escape from each floor level/ room in accordance with Table 4 & Appendix C.

Exit 1 Clear Opening Width = 1126mm (allows 225 persons to escape, largest opening discounted)
 Exit 2 Clear Opening Width = 1050mm (Mezzanine allows max 60 persons, Ground floor merging flow calculation allows 97 persons based on a stair clear width sufficient for 60 persons. Total 157 persons)
 Exit 3 Clear Opening Width = 1050mm (allows 220 persons to escape)
 Note exit 2 and 3 converge at an exit gate that is to be minimum 2100mm to maintain escape occupancy
 Operational target occupancy based on 30/01/2017 Fire Safety Occupancy Levels Forecast Total = Average Peak of 219 persons
 Designed Total Occupancy Capacity = 377 Persons
 Therefore the occupancy is thought to meet with the Approved Document Part B.

Fire Alarm:
 Fire Alarm designed and installed to BS 5839. Smoke & heat detection / emergency lighting by specialist. Please refer to M&E engineer's drawings / specifications.

Escape Lighting:
 Emergency escape lighting designed and installed in accordance with BS 5266: Part 1. Please refer to M&E Engineer's drawings for final layout and specification.

Escape Signage and emergency lighting is CDP under the M&E specification. Details of contractors proposals to be provided to Building Control Approved Inspector and Fire Officer within the Contractors Proposals Package, Clause 1.4

Rev	Date	Description	Drawn/Checked
C1	22.09.21	Rebanded for Construction	CD/PG

Warren Retail Park
 Unit 6, Warren Retail Park, Ashford, Kent, TN24 8XH

Fire Evacuation Plan
 Ground Floor & Mezzanine Floor

Drawn/Checked	Date	Scale	Job No.	Drawn No.
SS/CD	26.08.21	1:100 @ A1	0363	003 - FEP

CONSTRUCTION C1

Pure Gym Ltd
 Town Centre House
 The Merrion Centre
 Leeds
 LS2 8LY

e: architecture@puregym.com
 t: 0113 265 8787
 w: www.puregym.com