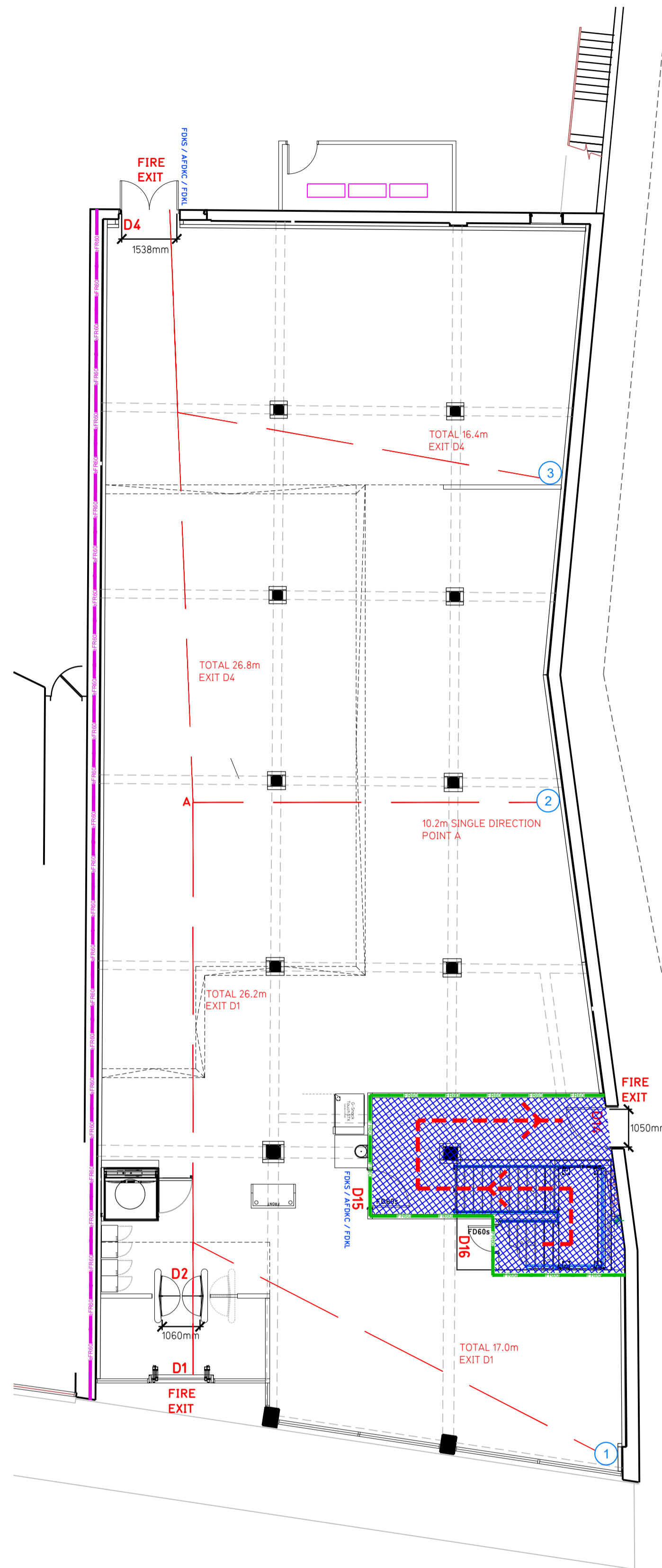
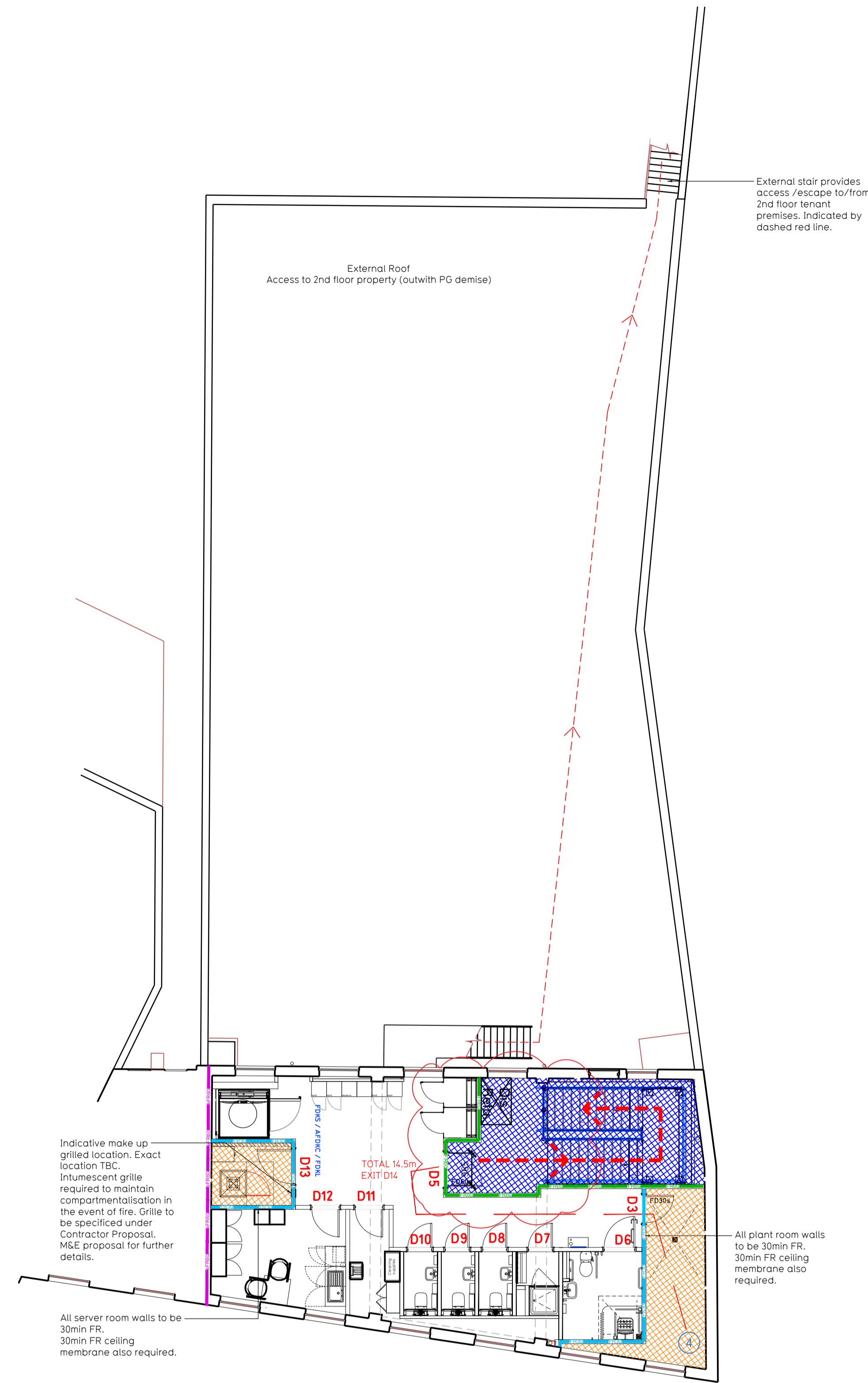


NOTE:

- Proposals must comply with all acoustic, fire & building regulation requirements
- No dimensions are to be scaled from this drawing. The contractor is responsible for checking all dimensions on site



Proposed Ground Floor Plan



Proposed First Floor Plan

Fire Evacuation Key	
	Existing wall to achieve min 30 minute fire rating (suitability of wall to be confirmed on site by Pure Gym Main Contractor)
	Existing wall to achieve min 60 minute fire rating (suitability of wall to be confirmed on site by Pure Gym Main Contractor)
	New wall to achieve min of 30min fire rating
	New wall to achieve min of 60min fire rating
	Protected areas: walls, floors, ceilings and doors to achieve 30minute fire resistant construction.
	Protected areas: walls, floors, ceilings and doors to achieve 60 minute fire resistant construction.
	Fire Escape Route
	Minimum Clear Widths
	Exit No.
	Shared Escape Route
	Fire Door Rating - 30min. / 60min.
	Fire Door Signage - Fire Door Keep Shut / Automatic Fire Door Keep Clear / Fire Door Keep Locked

Escape Route Widths:
In line with Sections 3.21 & 3.22 of 'Approved Document Part B, Volume 2 - buildings other than dwellings' - the adjacent calculations provide justification for the clear opening widths for escape from each floor level / room in accordance with Table 4 & Appendix C.

Ground Floor
Final Exit D1 limited by Internal Security Barrier D2 Clear Opening Width = 1060mm (allows 222 persons to escape)
Final Exit D4 Clear Opening Width = 1538mm (allows 317 persons to escape, largest opening to be discounted)

First Floor (final exit D4 at ground floor)
Final Exit D4 Clear Opening Width = 1538mm, however limited by exit D5 Clear Opening Width = 955mm (allows 110 persons to escape). Note exit is capped at 60 persons due to single escape exit on first floor.

Based on NIA of 5675sqft, the Puregym Max Peak Occupancy = 100 persons
Calculated using Puregym Fire Safety Occupancy Levels Forecast Tool.

The designed occupancy of the unit as calculated would allow a max. No. of 222 persons, which is larger than the total estimated occupancy target of 100 persons and is therefore thought to meet with the Approved Document Part B.

Fire Alarm
Fire Alarm designed and installed to BS 5839. Smoke & heat detection / emergency lighting by specialist. Please refer to M&E engineer's drawings / specifications.

Escape Lighting
Emergency escape lighted designed and installed in accordance with BS 5266: Part 1. Please refer to M&E Engineer's drawings for final layout and specification.

Fire Stopping
All services/drainage penetrations passing through fire rated compartments / walls to be fire collared/sealed.

Escape Signage/Emergency Lighting
Escape Signage and emergency lighting is CDP under the M&E specification. Details of contractors proposals to be provided to Building Control Approved Inspector and Fire Officer within the Contractors Proposals Package, Clause 1.4

Rev	Date	Description	Drawn/Checked
C01	17.07.24	Update clouded red	HB

PROJECT TITLE		DRAWING TITLE	
Homchurch (ex-Poundstretcher)		Fire Evacuation Plan	
187 High Street, Homchurch, RM11 3XT		Ground & First Floor Plan	
DRAWN / CHECKED	DATE	SCALE	DRAWING No.
HI/ HB	08.07.24	1:100 @ A1	0512b
DRAWING PURPOSE			003-FEP
CONSTRUCTION			C01

Pure Gym Ltd
Town Centre House
The Meriton Centre
Leeds
LS2 9LY

e: architecture@puregym.com
t: 0113 285 6787
w: www.puregym.com