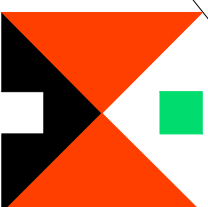


**MICHAEL HYDE AND ASSOCIATES LIMITED**  
*Chartered architects*



**MANCHESTER** ■ **SHEFFIELD** □

51 BARTON ARCADE ALLIANCE HOUSE  
 DEANSGATE LEOPOLD STREET  
 MANCHESTER M3 2BJ SHEFFIELD S1 2GY  
 TEL 0161 834 1018 TEL 0114 2759666  
 FAX 0161 834 4798 FAX 0114 2757751  
 Manchester@MHA Sheffield@MHA  
 architects.com architects.com

REV DATE DESCRIPTION

DRW CHK

PROJECT TITLE

**PURE GYM LTD**  
**THE ARUNDEL CENTRE, PORTSMOUTH**

DRAWING TITLE

**FIRE PLAN**

DRAWN/CHECKED

GL/HM

DATE

21.10.11

SCALE

1:200@A3

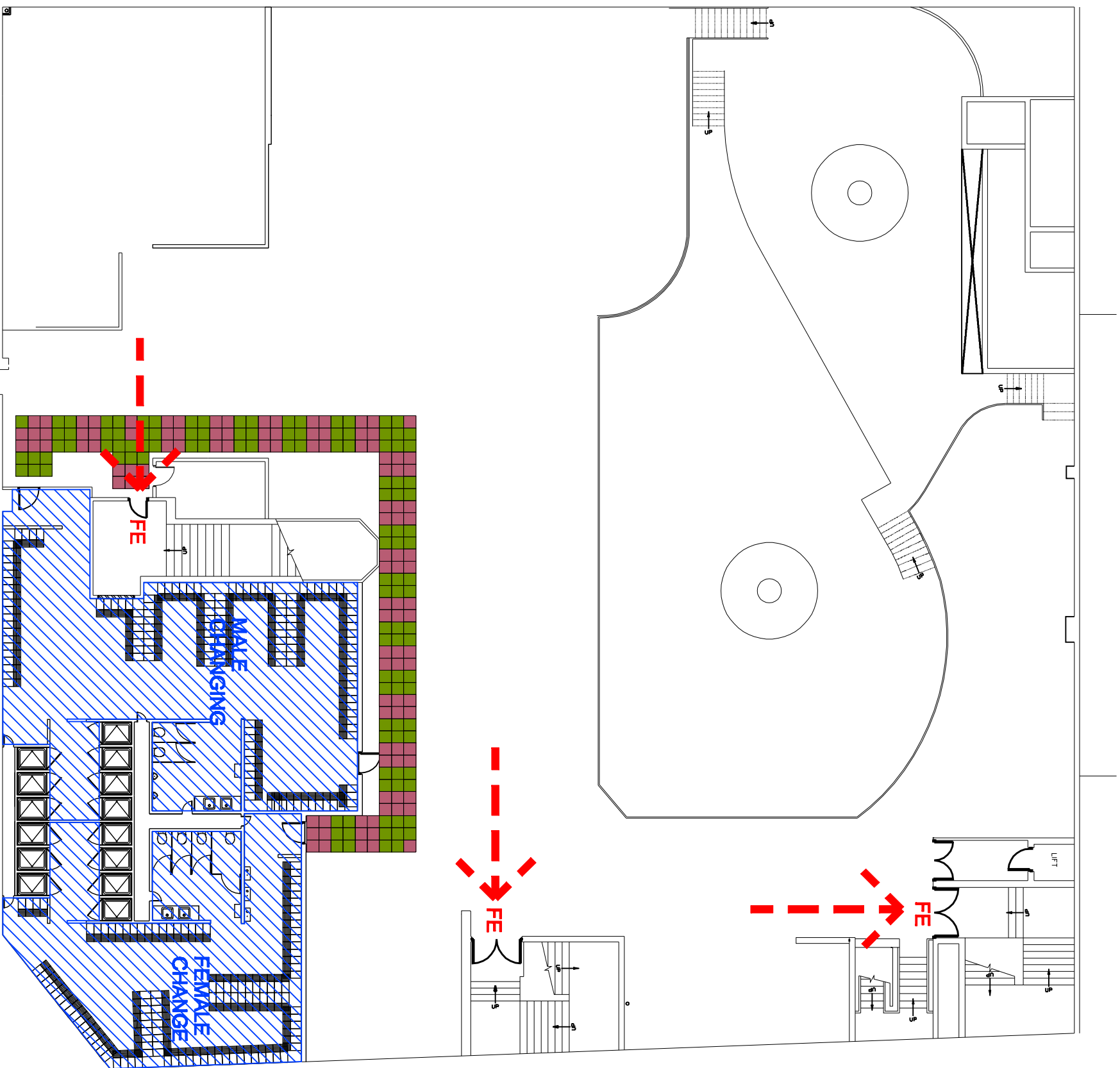
JOB No

1PG28

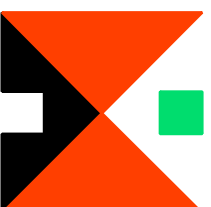
DRAWING

2-600

REVISIONS



**MICHAEL HYDE AND ASSOCIATES LIMITED**  
*Chartered architects*



MANCHESTER ■ SHEFFIELD □

51 BARTON ARCADE ALLIANCE HOUSE  
 DEANSGATE LEOPOLD STREET  
 MANCHESTER M3 2SU SHEFFIELD S1 2GY  
 TEL 0161 834 1018 TEL 0114 2789666  
 FAX 0161 834 4788 FAX 0114 2787751  
 Manchester@MHA Sheffield@MHA  
 architects.com architects.com

- C 12.03.12 LAYOUT AMENDED FOLLOWING DISCUSSIONS ON SITE
  - B 07.02.12 EXISTING WALLS ADJACENT TO THE MAIN STAIRCASE RETAINED
  - A 20.01.12 LAYOUT AMENDED FOLLOWING SKETCH FROM SVILS
- REV DATE DESCRIPTION

GL HM  
 GL HM  
 GG HM  
 DPM CHK

PROJECT TITLE  
**PURE GYM LTD**  
**THE ARUNDEL CENTRE, PORTSMOUTH**

DRAWING TITLE  
**MEZZANINE FLOOR**  
**FIRE PLAN**

DRAWN/CHECKED  
 GL/HM DATE  
 20.10.11 SCALE  
 1:200@A3

JOB No  
 1PG26 DRAWING  
 2-601 REVISIONS  
 C