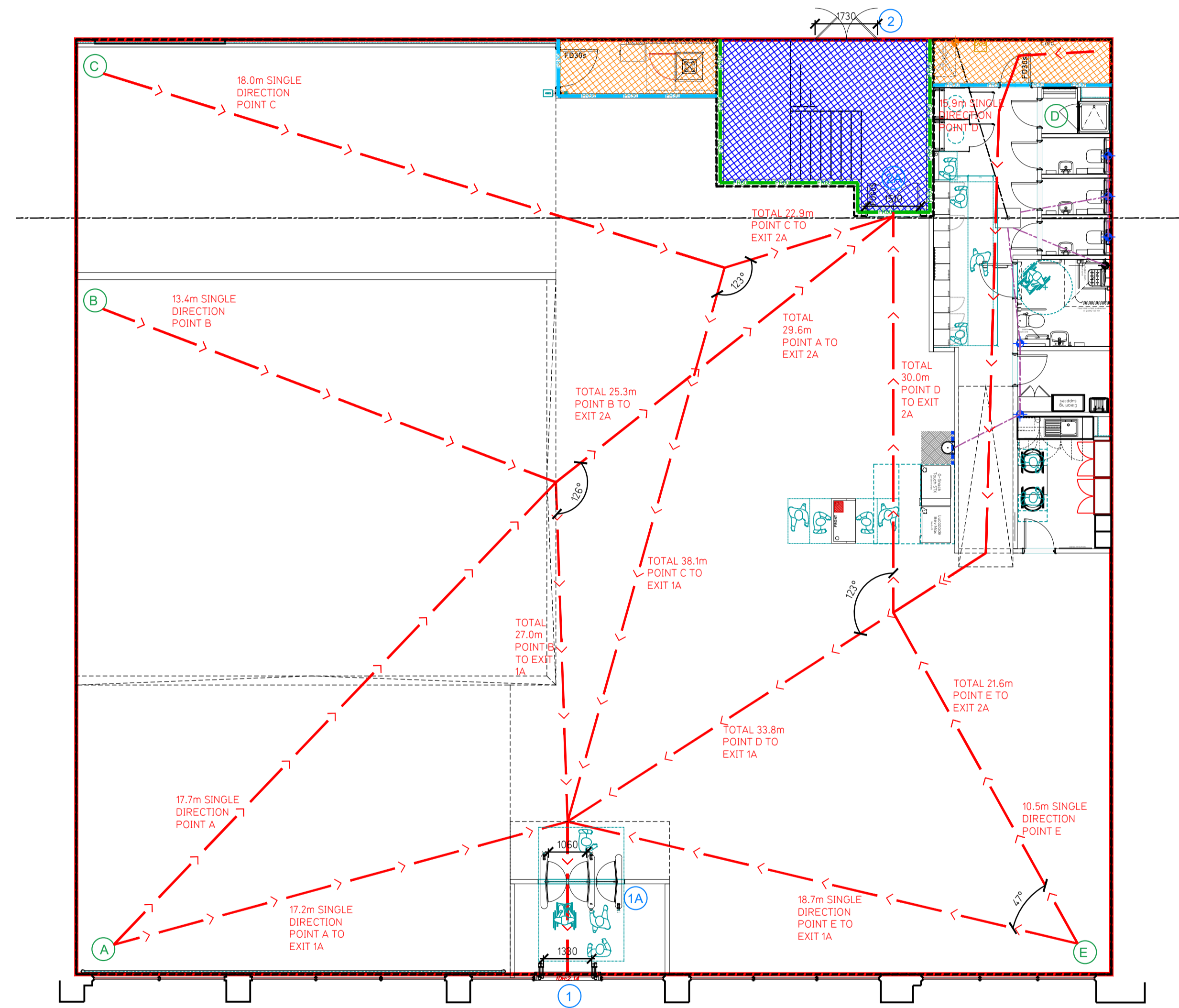


NOTE:

- Proposals must comply with all acoustic, fire & building regulation requirements
- No dimensions are to be scaled from this drawing. The contractor is responsible for checking all dimensions on site



Proposed Ground Floor Plan

Fire Evacuation Key

	Existing wall to achieve min 30 minute fire rating (suitability of wall to be confirmed on site by Pure Gym Main Contractor)		Fire Escape Route
	Existing wall to achieve min 60 minute fire rating (suitability of wall to be confirmed on site by Pure Gym Main Contractor)		Minimum Clear Widths
	New wall to achieve min of 30min fire rating		Exit No.
	New wall to achieve min of 60min fire rating		Shared Escape Route
	Protected areas: walls, floors, ceilings and doors to achieve 30minute fire resistant construction.		Fire Door Rating - 30min. / 60min.
	Protected areas: walls, floors, ceilings and doors to achieve 60 minute fire resistant construction.		Fire Door Signage - Fire Door Keep Shut / Automatic Fire Door Keep Clear / Fire Door Keep Locked

Escape Route Widths:
In line with Sections 3.216.3.22 of Approved Document Part B, Volume 2 - buildings other than dwellings - the adjacent calculations provide justification for the clear opening widths for escape from each floor level/ room in accordance with Table 4 & Appendix C.

Ground Floor
Exit 1A restricted by 1A. Exit 1A Clear Opening Width = 1060mm (allows 222 persons to escape)
Exit 2 is restricted by 2A. Exit 2A Clear Opening Width = 1050mm (allows 310 persons to escape, largest opening to be discounted)
Total Aggregate Width for Floor (Less Largest Opening Width of 1510 from Exit 2A = 1060mm (allows 222 persons to escape))

Total
Total = 222 persons to escape
Based on a NIA of 7695 sqm, the Puregym Peak Occupancy Target = 100 Persons
Calculated using Puregym Fire Safety Occupancy Levels Forecast Tool.

The designed occupancy of the unit as calculated below would allow a max. No. of 222 persons to escape, which is larger than the total estimated occupancy capacity of 100 Persons and is therefore thought to meet with the Approved Document Part B.

Fire Alarm
Fire Alarm designed and installed to BS 5839. Smoke & heat detection / emergency lighting by specialist. Please refer to M&E engineer's drawings / specifications.

Escape Lighting
Emergency escape lighted designed and installed in accordance with BS 5266: Part 1. Please refer to M&E Engineer's drawings for final layout and specification.

Fire Stopping
All perimeter edges of mezzanine to be appropriately fire stopped to create compartment floor and protect mezzanine structure. All services/drainage penetrations passing through fire rated compartment floor to be fire collared/sealed.

Escape Signage and emergency lighting is CDP under the M&E specification. Details of contractors proposals to be provided to Building Control Approved Inspector and Fire Officer within the Contractors Proposals Package, Clause 1.

Rev	Date	Description	Drawn/Checked

Ebbw Vale Unit 3 - 5 The Walk, Blaenau Gwent, NP23 6DL		Fire Evacuation Plan Ground Floor Plan	
DRAWN / CHECKED	DATE	DRAWING PURPOSE	SCALE
KW/CIS	08.08.24	CONSTRUCTION	1:100 @ A1

2453-GF-003-FEP-C00

Pure Gym Ltd
Town Centre House
The Merion Centre
Leeds
LS2 8LY
e: architecture@puregym.com
w: www.puregym.com