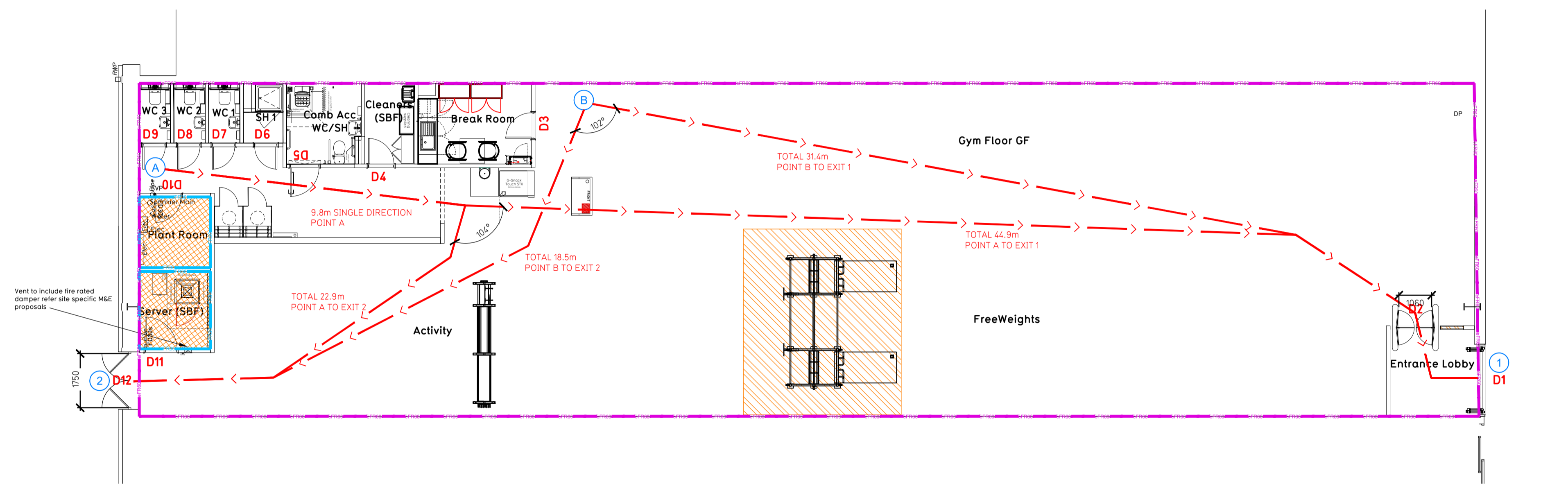


- NOTE:
- Proposals must comply with all acoustic, fire & building regulation requirements
 - No dimensions are to be scaled from this drawing. The contractor is responsible for checking all dimensions on site



Proposed Ground Floor Plan

Fire Evacuation Key

	Existing wall to achieve min 30 minute fire rating (suitability of wall to be confirmed on site by Pure Gym Main Contractor)		Fire Escape Route
	Existing wall to achieve min 60 minute fire rating (suitability of wall to be confirmed on site by Pure Gym Main Contractor)		Minimum Clear Widths
	New wall to achieve min of 30min fire rating		Exit No.
	New wall to achieve min of 60min fire rating		Shared Escape Route
	Protected areas: walls, floors, ceilings and doors to achieve 30minute fire resistant construction.		Fire Door Rating - 30min. / 60min.
	Protected areas: walls, floors, ceilings and doors to achieve 60 minute fire resistant construction.		Fire Door Signage - Fire Door Keep Shut / Automatic Fire Door Keep Clear / Fire Door Keep Locked

Escape Route Widths:
In line with Sections 3.21 & 3.22 of 'Approved Document Part B, Volume 2 - buildings other than dwellings' - the adjacent calculations provide justification for the clear opening widths for escape from each floor level/ room in accordance with Table 4 & Appendix C.

Ground Floor
Exit 1 (D1) - Clear Opening Width = 1050mm (allows 222 persons to escape)
Exit 2 (D2) - Clear Opening Width = 1750mm (allows 360 persons to escape, largest opening to be discounted)

Ground Floor Total Estimated Occupancy Capacity = 100 Persons

Exit 1 (D1) provides a min. width of 1050mm and would allow a max. No. of 222 persons to escape, which is larger than the total estimated occupancy capacity of 100 Persons and is therefore thought to meet with the Approved Document Part B.

Fire Alarm
Fire Alarm designed and Installed to BS 5839. Smoke & heat detection / emergency lighting by specialist. Please refer to M&E engineer's drawings / specifications.

Escape Lighting
Emergency escape lighted designed and installed in accordance with BS 5266: Part 1. Please refer to M&E Engineer's drawings for final layout and specification.

Fire Stopping
All services/drainage penetrations passing through fire rated compartment walls and ceilings to be fire collared/sealed.

Escape Signage and emergency lighting is CD' under the M&E specification. Details of contractors proposals to be provided to Building Control Approved Inspector and Fire Officer within the Contractors Proposals Package, Clause 14.

Rev	Date	Description	Drawn/Checked
PROJECT TITLE		DRAWING TITLE	
Shepton Mallet - VSBF		Fire Evacuation Plan	
Unit 4A Townsend Shopping Park		Ground Floor Plan	
DRAWN / CHECKED	DATE	DRAWING PURPOSE	SCALE
TH/CS	27.08.24	CONSTRUCTION	1:100 @ A1
DRAWING No. 2446-GF-003-FEP-C00			

Pure Gym Ltd
Town Centre House
The Merston Centre
Leeds
LS2 8LY

e: architecture@puregym.com
w: www.puregym.com