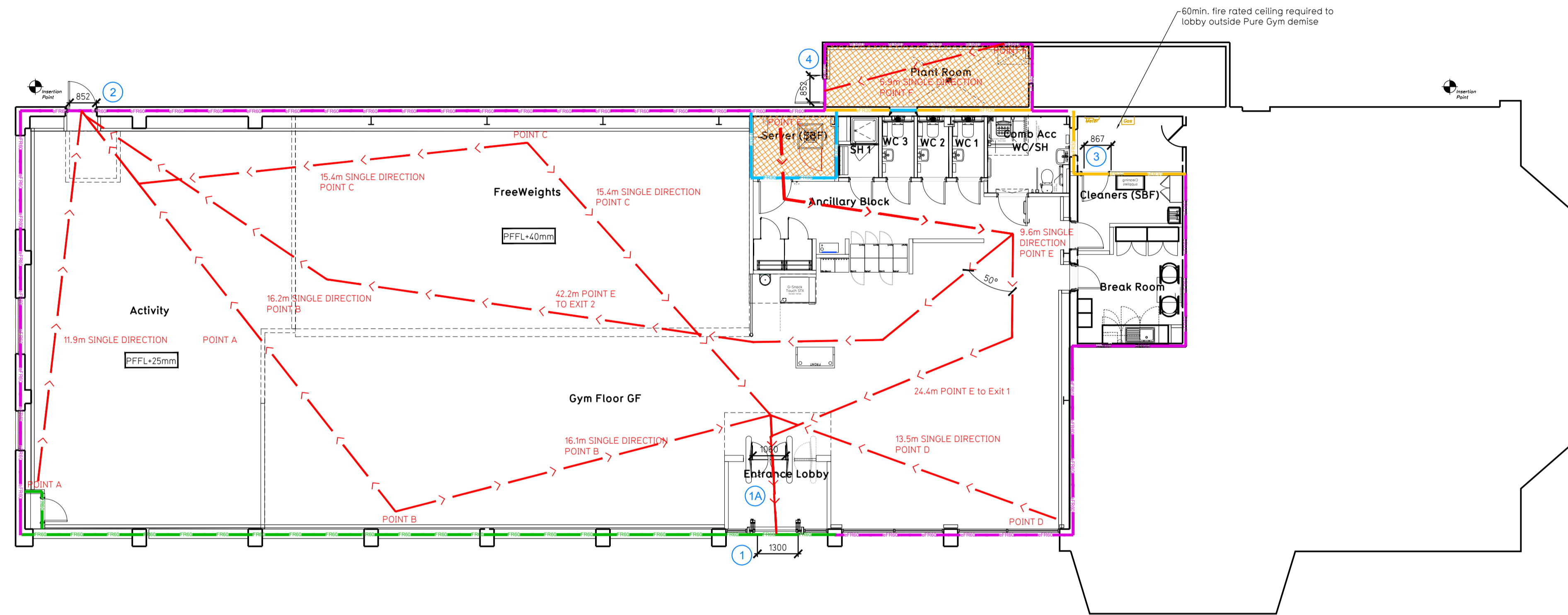


NOTE:

- Proposals must comply with all acoustic, fire & building regulation requirements
- No dimensions are to be scaled from this drawing. The contractor is responsible for checking all dimensions on site



Proposed Ground Floor Plan

Fire Evacuation Key	
	Existing wall to achieve min 30 minute fire rating (suitability of wall to be confirmed on site by Pure Gym Main Contractor)
	Existing wall to achieve min 60 minute fire rating (suitability of wall to be confirmed on site by Pure Gym Main Contractor)
	New wall to achieve min of 30min fire rating
	New wall to achieve min of 60min fire rating
	Fire Escape Route
	Minimum Clear Widths
	Exit No.
	Shared Escape Route
	Protected areas: walls, floors, ceilings and doors to achieve 30minute fire resistant construction.
	Protected areas: walls, floors, ceilings and doors to achieve 60 minute fire resistant construction.
	Fire Door Rating - 30min. / 60min.
	Fire Door Signage - Fire Door Keep Shut / Automatic Fire Door Keep Clear / Fire Door Keep Locked

Escape Route Widths:
In line with Sections 3.216, 3.32 of 'Approved Document Part B, Volume 2 - buildings other than dwellings' - the adjacent calculations provide justification for the clear opening widths for escape from each floor level/ room in accordance with Table 4 & Appendix C.

Ground Floor
Exit 1A restricted by exit 1A Clear Opening Width = 1060mm (allows 222 persons to escape, largest opening to be discounted)
Exit 2 Clear Opening Width = 856mm (min.) (allows 110 persons to escape)
Exit 3 Clear Opening Width = 765mm (allows 65 persons to escape)

Total Aggregate Width for Floor (Less Largest Opening Width of 1060mm from Exit 1A) = 1615mm
Ground Floor Total Estimated Occupancy Capacity = 100 Persons

Exits 2 & 3 would allow a max. No. of 170 persons to escape, which is larger than the total estimated occupancy capacity of 100 Persons and is therefore thought to meet with the Approved Document Part B.

Based on N/A of 5093 sqft, the PureGym max peak occupancy = 100 persons
Calculated using Puregym Fire Safety Occupancy Levels Forecast Tool.
The designed occupancy of the unit as calculated would allow a max. No. of 100 persons to escape, which is larger than the total estimated occupancy target of 100 persons and is therefore, thought to meet with the Approved Document Part B.

Fire Alarm
Fire Alarm designed and installed to BS 5839. Smoke & heat detection / emergency lighting by specialist. Please refer to M&E engineer's drawings / specifications.

Escape Lighting
Emergency escape lighted designed and installed in accordance with BS 5266: Part 1. Please refer to M&E Engineer's drawings for final layout and specification.

Escape Signage and emergency lighting is CDP under the M&E specification. Details of contractors proposals to be provided to Building Control Approved Inspector and Fire Officer within the Contractors Proposals Package, Clause 14.

Rev	Date	Description	Drawn/Checked

PROJECT TITLE Kendal Queen Katherine's Road, LA9 6DU	DRAWING TITLE Fire Evacuation Plan Ground Floor Plan
DRAWN / CHECKED SGK / KL	DATE 05.08.24
DRAWING PURPOSE CONSTRUCTION	SCALE 1:100 @ A1
2408-GF-003-FEP_C01	

Pure Gym Ltd
Town Centre House
The Merston Centre
Leeds
LS2 8LY

e: architecture@puregym.com
w: www.puregym.com