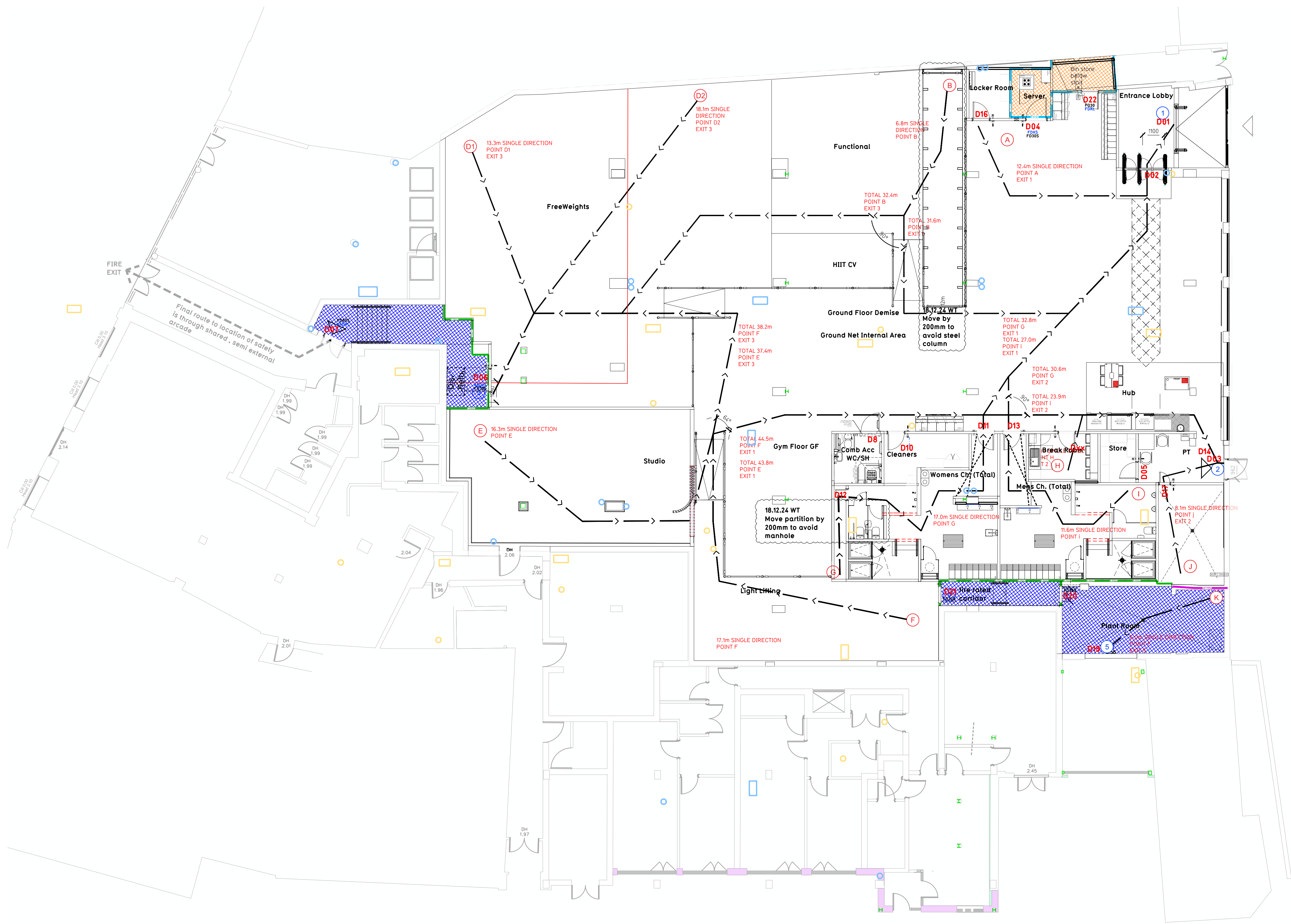


NOTE:

- Proposals must comply with all acoustic, fire & building regulation requirements
- No dimensions are to be scaled from this drawing. The contractor is responsible for checking all dimensions on site



Proposed Ground Floor Plan

Fire Evacuation Key

	Existing wall to achieve min 30 minute fire rating (suitability of wall to be confirmed on site by Pure Gym Main Contractor)		Fire Escape Route
	Existing wall to achieve min 60 minute fire rating (suitability of wall to be confirmed on site by Pure Gym Main Contractor)		Minimum Clear Widths
	New wall to achieve min of 30min fire rating		Route Origin
	New wall to achieve min of 60min fire rating		Exit No.
	Protected areas: walls, floors, ceilings and doors to achieve 30minute fire resistant construction.		Shared Escape Route
	Protected areas: walls, floors, ceilings and doors to achieve 60 minute fire resistant construction.		Fire Door Rating - 30min. / 60min.
			Fire Door Signage - Fire Door Keep Shut / Automatic Fire Door Keep Clear / Fire Door Keep Locked

Escape Route Widths:
 In line with Sections 3.216, 3.32 of 'Approved Document Part B, Volume 2 - buildings other than dwellings' - the adjacent calculations provide justification for the clear opening widths for escape from each floor level/ room in accordance with Table 4 & Appendix C.

Ground Floor
 Exit 1 Clear Opening Width = 1000mm (allows 230 persons to escape) (Largest opening to be discounted from Occupancy Calc)
 Exit 2 Clear Opening Width = 1050mm (allows 230 persons to escape)
 Exit 3 Clear Opening Width = 1050mm (allows 60 persons to escape due to direction of final exit)

Total Aggregate Width for Ground Floor (Less discounted openings) = 1050mm
 Ground Floor Total Estimated Occupancy Capacity = 280 Persons
 which is larger than the total estimated occupancy capacity of 186 Persons and is therefore thought to meet with the Approved Document Part B.

Fire Alarm
 Fire Alarm designed and installed to BS 5839. Smoke & heat detection / emergency lighting by specialist. Please refer to M&E Engineer's drawings / specifications.

Escape Lighting
 Emergency escape lighting designed and installed in accordance with BS 5266: Part 1. Please refer to M&E Engineer's drawings for final layout and specification.

Fire Stopping
 All perimeter wall penetrations to be appropriately fire stopped to create one compartment.

Escape Signage and emergency lighting is CD under the M&E specification. Details of contractor proposals to be provided to Building Control Approved Inspector and Fire Officer within the Contractors Proposal Package, Clause 1.4

Rev	Date	Description	Drawn/Checked
C01	18.12.24	Updated with Manhole Position. Women WC to increase in width. Prowler Track moved by 200mm in lieu of steel column	THWLT
C00	18.10.24	Initial Construction Drawings Pack Bin Store Added Updated Studio Screen Implemented & approach ramp repositioned to suit.	TT/CD

PROJECT TITLE	DRAWING TITLE
London Beckenham 50 Burnhill Road, Beckenham, Kent BR3 3LA	Fire & Evacuation Plan Ground Floor Plan
DRAWN / CHECKED	DATE
TT/CD	12.08.24
CONSTRUCTION	SCALE
2452-GF-003-FEP-C01	1:100 @ A1

Pure Gym Ltd
 Town Centre House
 The Mermon Centre
 Leeds
 LS2 8LY

architecture@puregym.com
 www.puregym.com