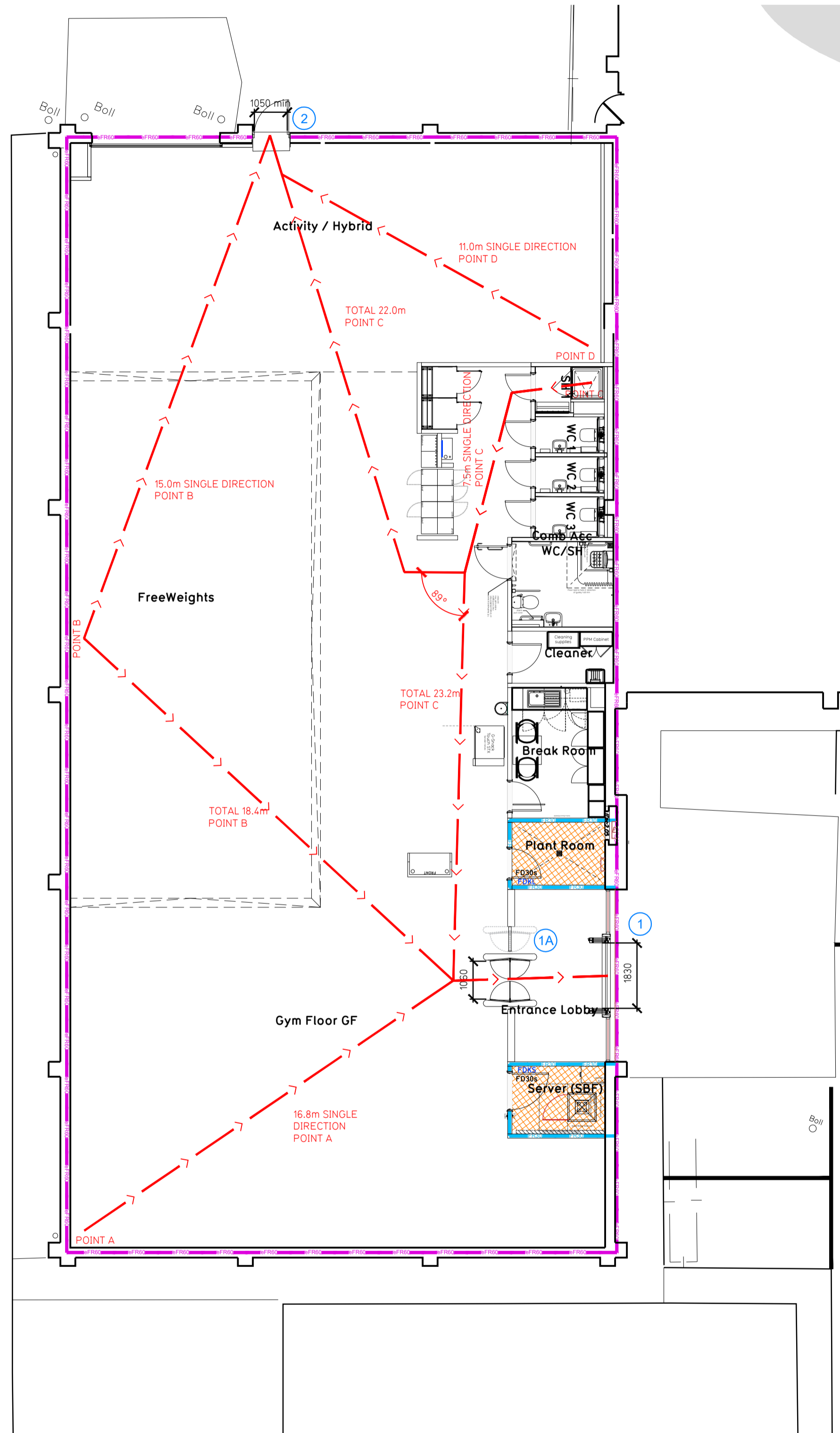


- NOTE:
- Proposals must comply with all acoustic, fire & building regulation requirements
 - No dimensions are to be scaled from this drawing. The contractor is responsible for checking all dimensions on site



Fire Evacuation Key

	Existing wall to achieve min 30 minute fire rating (suitability of wall to be confirmed on site by Pure Gym Main Contractor)		Fire Escape Route
	Existing wall to achieve min 60 minute fire rating (suitability of wall to be confirmed on site by Pure Gym Main Contractor)		Minimum Clear Widths
	New wall to achieve min of 30min fire rating		Exit No.
	New wall to achieve min of 60min fire rating		Shared Escape Route
	Protected areas: walls, floors, ceilings and doors to achieve 30minute fire resistant construction.		Fire Door Rating - 30min. / 60min.
	Protected areas: walls, floors, ceilings and doors to achieve 60 minute fire resistant construction.		Fire Door Signage - Fire Door Keep Shut / Automatic Fire Door Keep Clear / Fire Door Keep Locked

Escape Route Widths:
 In line with Sections 3.21 & 3.22 of 'Approved Document Part B, Volume 2 - buildings other than dwellings' - the adjacent calculations provide justification for the clear opening widths for escape from each floor level/ room in accordance with Table 4 & Appendix C.

Ground Floor
 Exit 1a (limited by Exit 1a Clear Opening Width = 1060mm (allows 222 persons to escape, largest opening to be discounted)
 Exit 2 Clear Opening Width = 1050mm (allows 220 persons to escape)

Total Aggregate Width for Floor (Less Largest Opening Width of 1060mm from Exit 1a) = 1050mm
 Ground Floor Total Estimated Occupancy Capacity = 220 Persons

Exit 2 provides a min. width of 1050mm and would allow a max. No. of 220 persons to escape, which is larger than the total estimated occupancy capacity of 100 Persons and is therefore thought to meet with the Approved Document Part B.

Fire Alarm
 Fire Alarm designed and installed to BS 5839. Smoke & heat detection / emergency lighting by specialist. Please refer to M&E engineer's drawings / specifications.

Escape Lighting
 Emergency escape lighted designed and installed in accordance with BS 5266: Part 1. Please refer to M&E Engineer's drawings for final layout and specification.

Escape Signage and emergency lighting is CDP under the M&E specification. Details of contractors proposals to be provided to Building Control Approved Inspector and Fire Officer within the Contractors Proposals Package, Clause 1.4

Rev	Date	Description	Drawn/ Checked
PROJECT TITLE Alfreton Unit B, Nottingham Road, Alfreton DE55 4JJ			
DRAWN / CHECKED RS		DATE 18.09.24	DRAWING PURPOSE CONSTRUCTION
DRAWING No. 2431B-GF-003-FEP_C00		SCALE 1:100 @ A1	
			Pure Gym Ltd Town Centre House The Merston Centre Leeds LS2 8LY e: architecture@puregym.com w: www.puregym.com