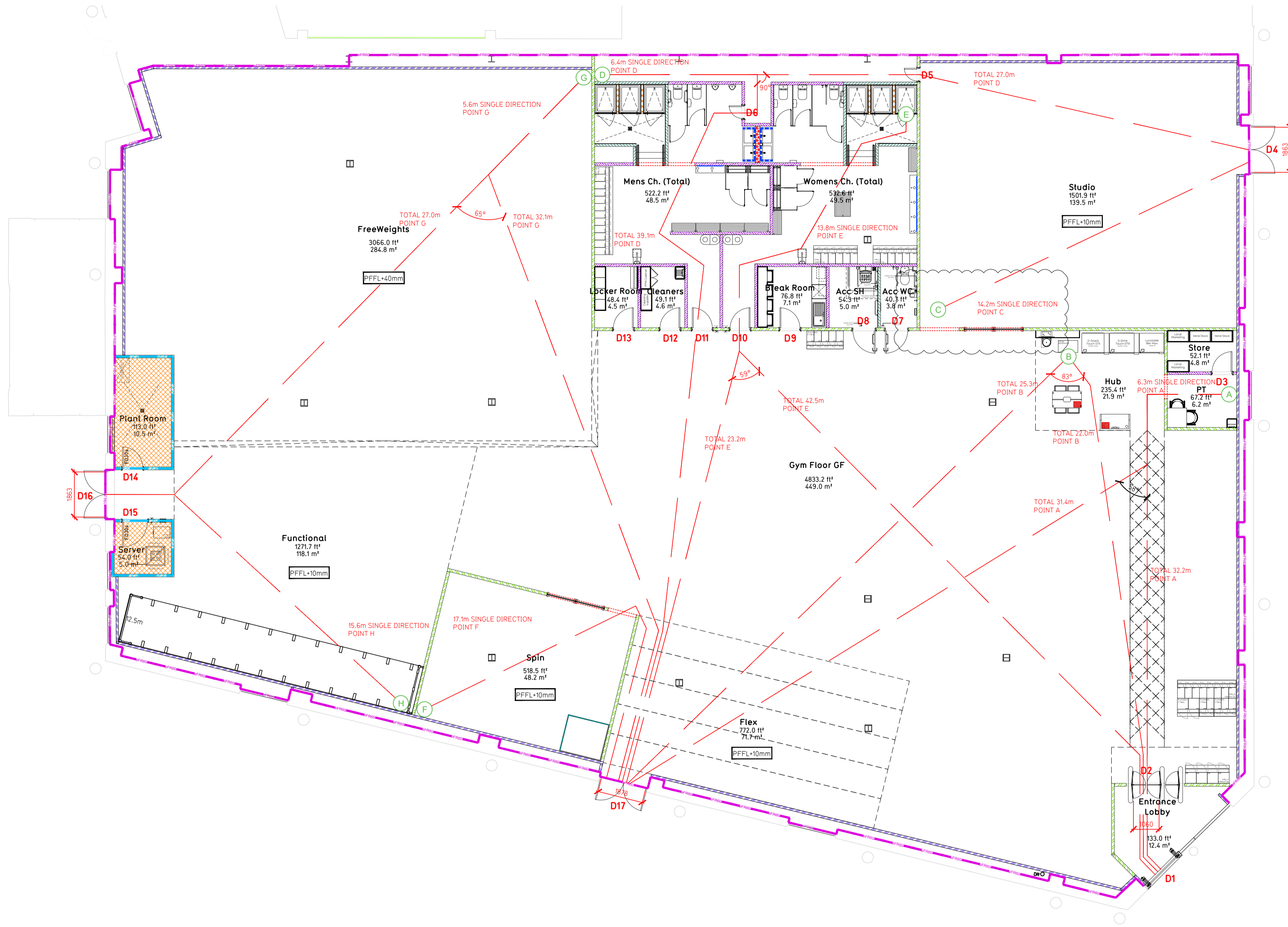


NOTE:

- Proposals must comply with all acoustic, fire & building regulation requirements
- No dimensions are to be scaled from this drawing. The contractor is responsible for checking all dimensions on site



Proposed Ground Floor Plan

Fire Evacuation Key

	Existing wall to achieve min 30 minute fire rating (suitability of wall to be confirmed on site by Pure Gym Main Contractor)		Fire Escape Route
	Existing wall to achieve min 60 minute fire rating (suitability of wall to be confirmed on site by Pure Gym Main Contractor)		Minimum Clear Widths
	New wall to achieve min of 30min fire rating		Exit No.
	New wall to achieve min of 60min fire rating		Shared Escape Route
	Protected areas: walls, floors, ceilings and doors to achieve 30minute fire resistant construction.		Fire Door Rating
	Protected areas: walls, floors, ceilings and doors to achieve 60 minute fire resistant construction.		

Escape Route Widths:
 In line with Sections 3.21.6, 3.32 of 'Approved Document Part B, Volume 2 - buildings other than dwellings' - the adjacent calculations provide justification for the clear opening widths for escape from each floor level/ room in accordance with Table 4 & Appendix C.

Ground Floor
 Exit D1 is fed by Exit D2 Clear Opening Width = 1060mm (allows 222 persons to escape)
 Exit D4 Clear Opening Width = 963mm (allows 382 persons to escape)
 Exit D16 Clear Opening Width = 963mm (allows 382 persons to escape)
 Exit D7 Clear Opening Width = 1878mm (allows 385 persons to escape, largest opening to be discounted)

Total Aggregate Width for Floor (Less Largest Opening Width of 1878mm from EXIT D2 = 4786mm)
 Ground Floor Total Estimated Occupancy Capacity = 386 Persons

Based on a N/A of 14,516 sqft, the Puregym Peak Occupancy Target = 240 Persons
 Calculated using Puregym Fire Safety Occupancy Levels Forecast Tool.

The designed occupancy of the unit as calculated above would allow a max. No. of 386 persons to escape, which is larger than the total estimated occupancy capacity of 240 Persons and is therefore thought to meet with the Approved Document Part B.

Sprinklers
 System design and installed in compliance with BS EN 12845:2015 & LPC Technical Bulletins

Fire Alarm
 Fire Alarm designed and installed to BS 5839. Smoke & heat detection / emergency lighting by specialist. Please refer to MSE engineer's drawings / specifications.

Escape Lighting
 Emergency escape lighting designed and installed in accordance with BS 5266: Part 1. Please refer to MSE Engineer's drawings for final layout and specification.

Smoke Extract
 Smoke Extract System to be designed and installed in accordance with BS 7346: Part 8. Please refer to MSE Engineer's drawings for final layout and specification.

Fire Stopping
 All perimeter edges of mezzanine to be appropriately fire stopped to create compartment floor and protect mezzanine structure. All services/drainage penetrations passing through fire rated compartment floor to be fire collared/sealed.

Escape Signage and emergency lighting is CDP under the MSE specification. Details of contractors proposals to be provided to Building Control Approved Inspector and Fire Officer within the Contractors Proposals Package, Clause 1.4

Rev	Date	Description	Drawn/Checked
PROJECT TITLE		DRAWING TITLE	
Stockton-On-Tees		Fire Evacuation Plan	
Unit C2, Teesside Leisure Park, TS17 7BU		Ground and First Floor Plans	
DRAWING NO.	DWG DATE	SCALE	DRAWING No.
003-FEP	01.12.23	1:100 @ A1	2261
DRAWING PURPOSE			Rev
CONSTRUCTION			C01

PUREGYM

Pure Gym Ltd
 Town Centre House
 The Merrion Centre
 Leeds
 LS2 8LY
 e: architecture@puregym.com
 t: 0113 285 8787
 w: www.puregym.com