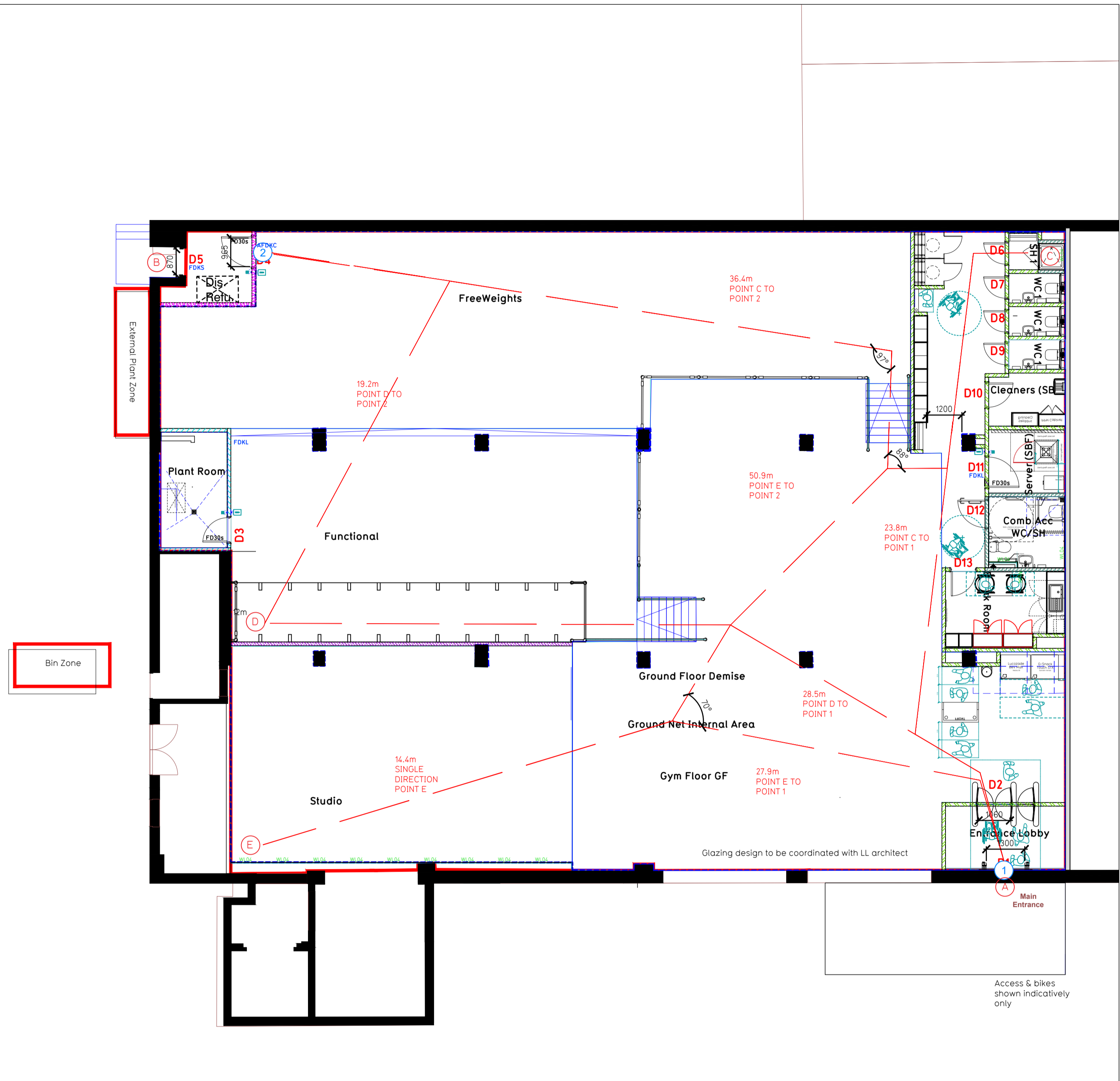


DRAWING APPLICABLE TO:													
MARKET	GP	EN	SC	NI	CH	DK	US	JP	SA	AE	-	-	-
FORMAT	LBF	MBF	SBF	VSBF	OTHER								

NOTES:

- Proposals must comply with all acoustic, fire & building regulation requirements
- No dimensions are to be scaled from this drawing. The contractor is responsible for checking all dimensions on site



Ground Floor Plan

Fire Evacuation Key	
	Existing wall to achieve min 30 minute fire rating (suitability of wall to be confirmed on site by Pure Gym Main Contractor)
	Existing wall to achieve min 60 minute fire rating (suitability of wall to be confirmed on site by Pure Gym Main Contractor)
	New wall to achieve min of 30min fire rating
	New wall to achieve min of 60min fire rating
	Fire Escape Route
	Minimum Clear Widths
	Exit No.
	Shared Escape Route
	Protected areas: walls, floors, ceilings and doors to achieve 30minute fire resistant construction.
	Protected areas: walls, floors, ceilings and doors to achieve 60 minute fire resistant construction.
	FDK / FD60 Fire Door Rating - 30min. / 60min.
	FDKS / AFDKC / FDKL Fire Door Signage - Fire Door Keep Shut / Automatic Fire Door Keep Clear / Fire Door Keep Locked

Escape Route Widths:
 In line with Sections 3.21 & 3.22 of 'Approved Document Part B, Volume 2 - buildings other than dwellings' - the adjacent calculations provide justification for the clear opening widths for escape from each floor level/ room in accordance with Table 4 & Appendix C.

Ground Floor
 Exit 1 Clear Opening Width = 1050mm (allows 222 persons to escape)
 Exit 2 Clear Opening Width = 870mm (allows 100 persons to escape) (largest opening to be discounted)

Total Aggregate Width for Floor (Less Largest Opening Width of 1050mm from Exit 1) = 870mm
 Ground Floor Total Estimated Occupancy Capacity = 100 Persons

Achieved Occupancy 100 Persons, which is in line with the total estimated occupancy capacity of 100 Persons as benchmarked from live data for a PureGym of this size and is therefore thought to meet with the Approved Document Part B.

Sprinklers
 Not required

Fire Alarm
 Fire Alarm designed and installed to BS 5839. Smoke & heat detection / emergency lighting by specialist. Please refer to MSE engineer's drawings / specifications.

Escape Lighting
 Emergency escape lighting designed and installed in accordance with BS 5266: Part 1. Please refer to MSE Engineer's drawings for final layout and specification.

Smoke Extract
 Not Required

Fire Stopping
 All perimeter edges of mezzanine to be appropriately fire stopped to create compartment floor and protect mezzanine structure. All services/drainage penetrations passing through fire rated compartment floor to be fire coloured/ drilled.

Escape Signage and emergency lighting is CDP under the MSE specification. Details of contractors proposals to be provided to Building Control Approved Inspector and Fire Officer within the Contractors Proposals Package, Clause 14.

000	27.08.24	Construction Pack Re-Badge.	TT/CD	Drawn/ Checked
Rev	Date	Description		
PROJECT TITLE		DRAWING TITLE		
Swanley Square, Kent, BR8 7TQ		Fire Evacuation Plan Ground Floor Plan		
DRAWN / CHECKED		DATE	DRAWING PURPOSE	SCALE
TT/CD		27.08.24	Construction	1:100@ A1
DRAWING No. 2380-GF-003-FEP-C00				
		Pure Gym Ltd Town Centre House The Merston Centre Leeds LS2 8LY e: architecture@puregym.com w: www.puregym.com		