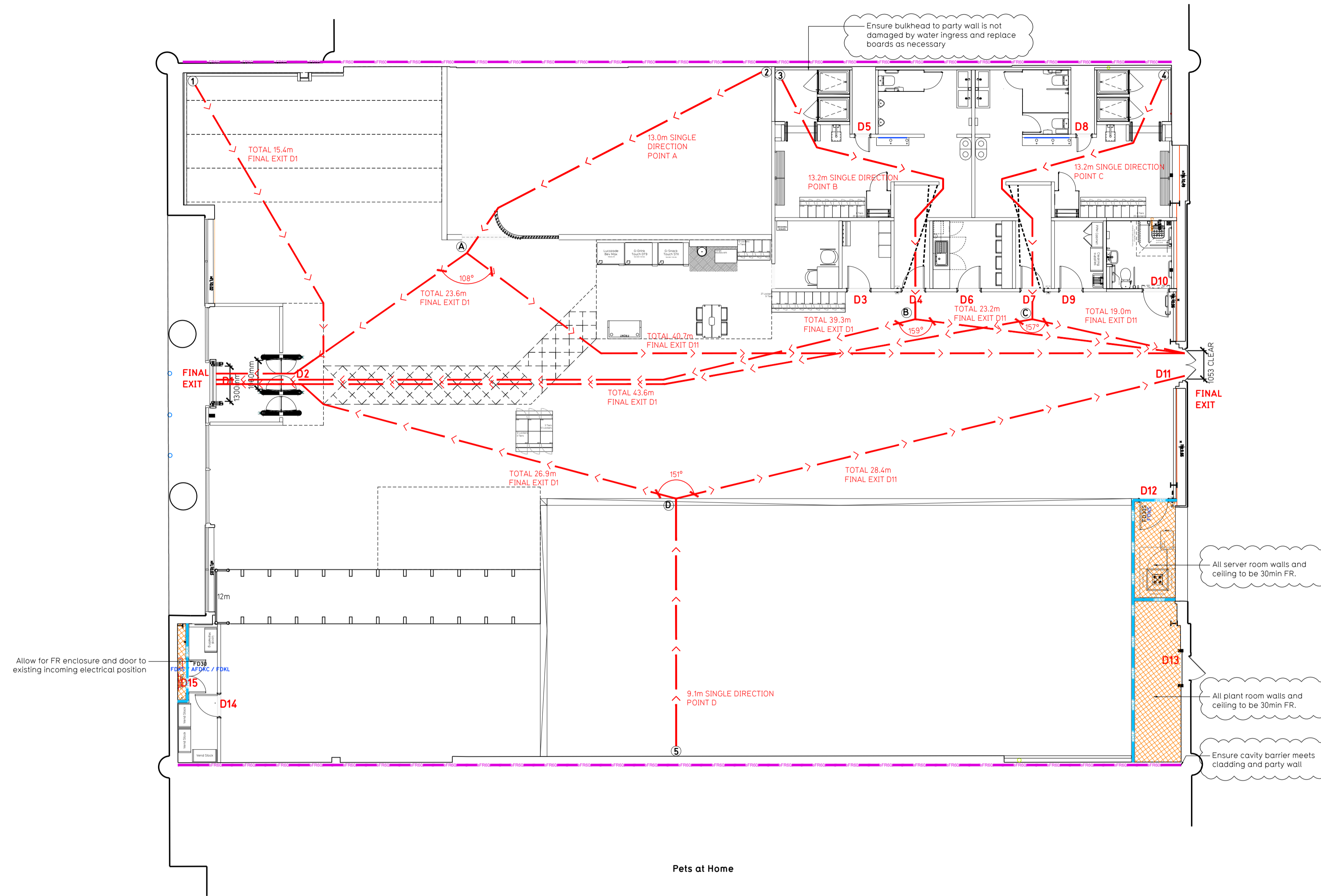


- NOTE:
- Proposals must comply with all acoustic, fire & building regulation requirements
  - No dimensions are to be scaled from this drawing. The contractor is responsible for checking all dimensions on site



Proposed Ground Floor Plan

Fire Evacuation Key	
	Existing wall to achieve min 30 minute fire rating (suitability of wall to be confirmed on site by Pure Gym Main Contractor)
	Fire Escape Route
	Existing wall to achieve min 60 minute fire rating (suitability of wall to be confirmed on site by Pure Gym Main Contractor)
	New wall to achieve min of 30min fire rating
	New wall to achieve min of 60min fire rating
	Protected areas: walls, floors, ceilings and doors to achieve 30minute fire resistant construction.
	Protected areas: walls, floors, ceilings and doors to achieve 60 minute fire resistant construction.
	Minimum Clear Widths
	Exit No.
	Shared Escape Route
	Fire Door Rating - 30min. / 60min.
	Fire Door Signage - Fire Door Keep Shut / Automatic Fire Door Keep Clear / Fire Door Keep Locked

**Escape Route Widths:**  
In line with Sections 3.21 & 3.22 of 'Approved Document Part B, Volume 2 - buildings other than dwellings' - the adjacent calculations provide justification for the clear opening widths for escape from each floor level/ room in accordance with Table 4 & Appendix C.

**Ground Floor:**  
Final Exit D1 limited by Internal Security Barrier D2 Clear Opening Width = 1060mm (allows 222 persons to escape, largest opening to be discounted)  
Final Exit D11 Clear Opening Width = 1053mm (allows 220 persons to escape)

Based on NIA of 9959sqft, the Puregym max peak occupancy target = 153 persons  
Calculated using Puregym Fires Safety Occupancy Levels Forecast Tool.

The designed occupancy of the unit as calculated would allow a max. No. of 220 persons, which is larger than the total estimated occupancy target of 152 persons and is therefore thought to meet with the Approved Document Part B.

**Fire Alarm**  
Fire Alarm designed and installed to BS 5839. Smoke & heat detection / emergency lighting by specialist. Please refer to M&E engineer's drawings / specifications.

**Escape Lighting**  
Emergency escape lighted designed and installed in accordance with BS 5266: Part 1. Please refer to M&E Engineer's drawings for final layout and specification.

**Fire Stopping**  
Escape Signage and emergency lighting is CDP under the M&E specification. Details of contractors proposals to be provided to Building Control Approved Inspector and Fire Officer within the Contractors Proposals Package, Clause 1.4

Rev	Date	Description	Drawn/ Checked
<b>PROJECT TITLE</b> Bridgend Bridgend Retail Park, Waterton Ind Est, Mid Glamorgan, CF31 3TN			
<b>DRAWING PURPOSE</b> Fire Evacuation Plan Ground Floor Plan			
<b>DRAWN / CHECKED</b> H/CS		<b>DATE</b> 17.09.24	
<b>DRAWING NO.</b> 2490-GF-003-FEP-C00		<b>SCALE</b> 1:100 @ A1	
<b>CONSTRUCTION</b>			

Pure Gym Ltd  
 Town Centre House  
 The Merion Centre  
 Leeds  
 LS2 8LY  
 e: architecture@puregym.com  
 w: www.puregym.com