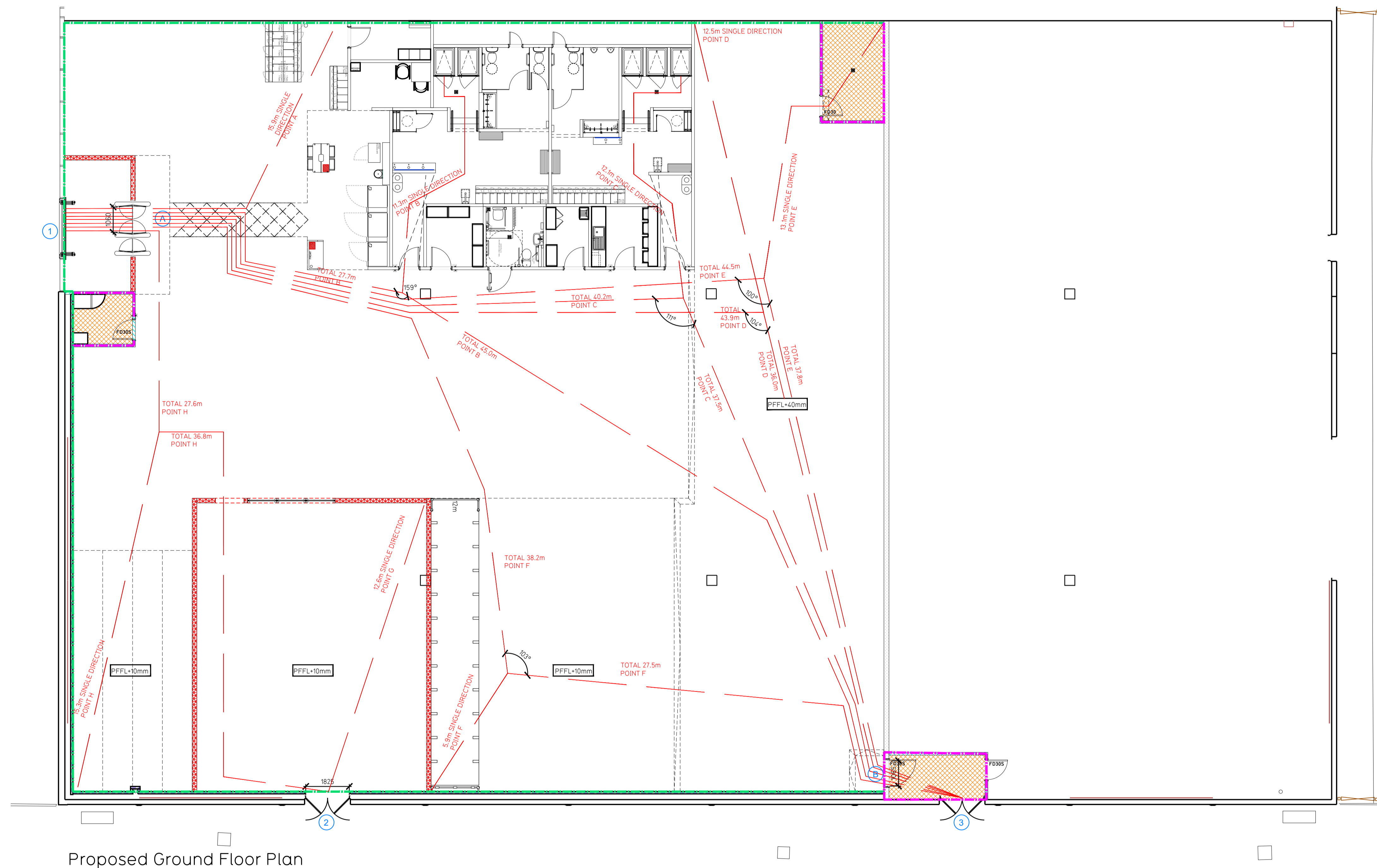


NOTE:

- Proposals must comply with all acoustic, fire & building regulation requirements
- No dimensions are to be scaled from this drawing. The contractor is responsible for checking all dimensions on site



Proposed Ground Floor Plan

Fire Evacuation Key

| | | | |
|--|--|--|----------------------|
| | Existing wall to achieve min 30 minute fire rating (suitability of wall to be confirmed on site by Pure Gym Main Contractor) | | Fire Escape Route |
| | Existing wall to achieve min 60 minute fire rating (suitability of wall to be confirmed on site by Pure Gym Main Contractor) | | Minimum Clear Widths |
| | New wall to achieve min of 30min fire rating | | Exit No. |
| | New wall to achieve min of 60min fire rating | | Shared Escape Route |
| | Protected areas: walls, floors, ceilings and doors to achieve 30minute fire resistant construction. | | Fire Door Rating |
| | Protected areas: walls, floors, ceilings and doors to achieve 60 minute fire resistant construction. | | |

Escape Route Widths:
 In line with Sections 3.21 & 3.22 of 'Approved Document Part B, Volume 2 - buildings other than dwelling houses' - the adjacent calculations provide justification for the clear opening widths for escape from each floor level/room in accordance with Table 4 & Appendix C.

Exit 1 is restricted by A. Exit A Clear Opening Width = 1050mm (allows 223 persons to escape)
 Exit 2 Clear Opening Width = 1825mm (allows 375 persons to escape, largest opening to be discounted)
 Exit 3 is restricted by B. Exit B Clear Opening Width = 1050mm (allows 223 persons to escape)

Total Aggregate Width for Floor (Less Largest Opening Width of 1825mm from Exit 2 + 2125mm)
Total = 445 persons to escape

Based on a NIA of 11,913 sqft, the Puregym Peak Occupancy Target = 276 Persons
 Calculated using Puregym Fire Safety Occupancy Levels Forecast Tool.
 The designed occupancy of the unit as calculated above would allow a max. No. of 445 persons to escape, which is larger than the total estimated occupancy capacity of 276 Persons and is therefore thought to meet with the Approved Document Part B.

Sprinklers
 System design and installed in compliance with BS EN 12845:2015 & LPC Technical Bulletins.

Fire Alarm
 Fire Alarm designed and installed to BS 5839. Smoke & heat detection / emergency lighting by specialist. Please refer to MSE engineer's drawings / specifications.

Escape Lighting
 Emergency escape lighting designed and installed in accordance with BS 5266: Part 1. Please refer to MSE Engineer's drawings for final layout and specification.

Escape Signage and emergency lighting is CDF under the MSE specification. Details of contractors proposals to be provided to Building Control Approved Inspector and Fire Officer within the Contractors Proposals Package, Clause 14

| Rev | Date | Description | DRAWING TITLE | Drawn/Checked |
|-----------------|----------|-------------|--|--|
| | | | Nottingham, Colwick Colwick Loop Rd, Colwick, Nottingham NG4 2JN | Fire Evacuation Plan Ground Floor Plan |
| SK/KL | 03.07.23 | | SCALE: 1:100 @ A1 | 2274 |
| DRAWING PURPOSE | | | CONSTRUCTION | Rev |
| | | | | C01 |

PUREGYM

Pure Gym Ltd
 Town Centre House
 The Merrion Centre
 Leeds
 LS2 8LY
 e: architecture@puregym.com
 t: 0113 285 8787
 w: www.puregym.com