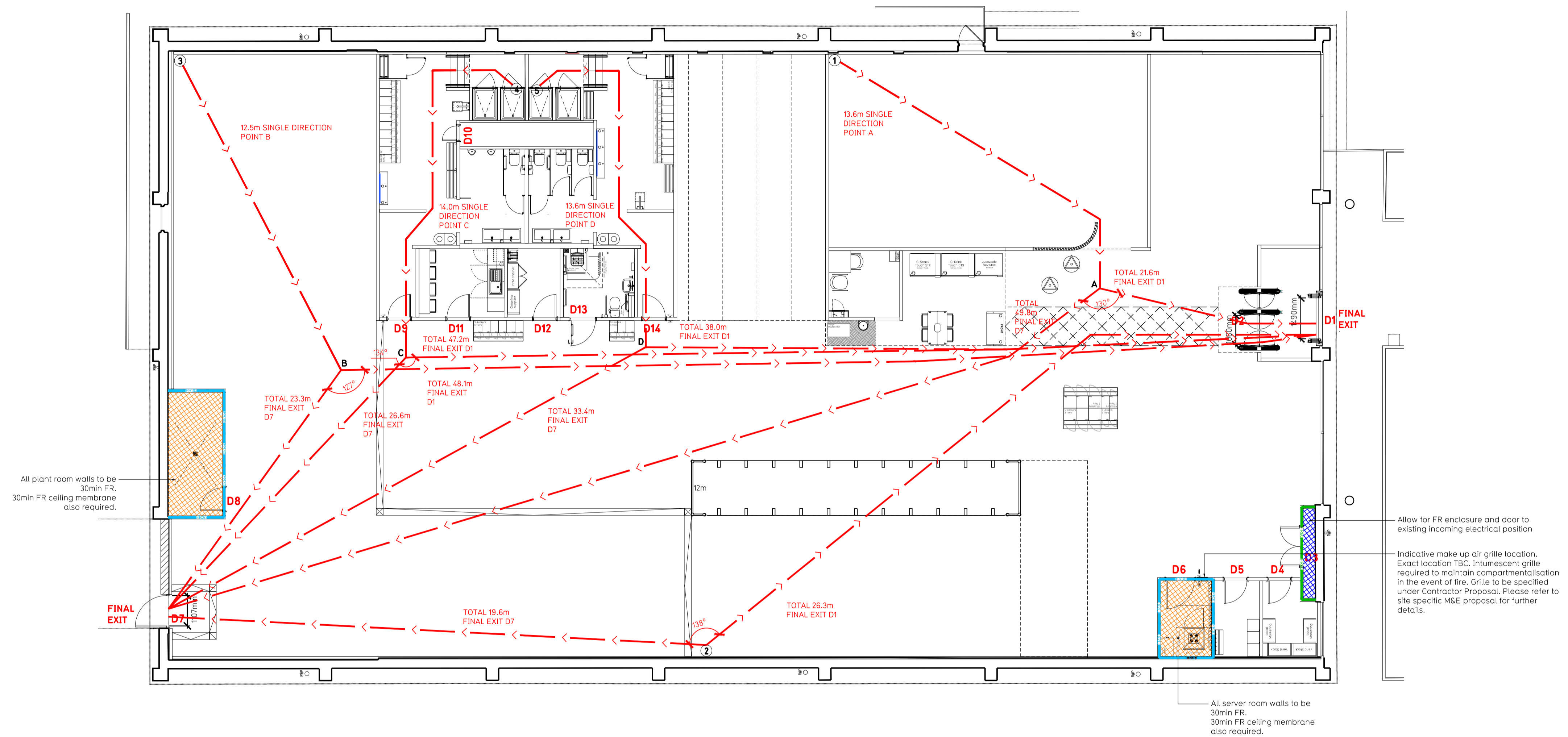


- NOTE:
- Proposals must comply with all acoustic, fire & building regulation requirements
 - No dimensions are to be scaled from this drawing. The contractor is responsible for checking all dimensions on site



Proposed Ground Floor Plan

Fire Evacuation Key

	Existing wall to achieve min 30 minute fire rating (suitability of wall to be confirmed on site by Pure Gym Main Contractor)		Fire Escape Route
	Existing wall to achieve min 60 minute fire rating (suitability of wall to be confirmed on site by Pure Gym Main Contractor)		Minimum Clear Widths
	New wall to achieve min of 30min fire rating		Exit No.
	New wall to achieve min of 60min fire rating		Shared Escape Route
	Protected areas: walls, floors, ceilings and doors to achieve 30minute fire resistant construction.		Fire Door Rating - 30min. / 60min.
	Protected areas: walls, floors, ceilings and doors to achieve 60 minute fire resistant construction.		Fire Door Signage - Fire Door Keep Shut / Automatic Fire Door Keep Clear / Fire Door Keep Locked

Escape Route Widths:
 In line with Sections 3.21 & 3.22 of 'Approved Document Part B, Volume 2 - buildings other than dwellings' - the adjacent calculations provide justification for the clear opening widths for escape from each floor level/ room in accordance with Table 4 & Appendix C.

Ground Floor
 Final Exit D1 limited by Internal Security Barrier D2 Clear Opening Width = 1050mm (allows 222 persons to escape)
 Final Exit D7 Clear Opening Width = 1107mm (allows 231 persons to escape, largest opening to be discounted)

Based on N/A of 1003sqm, the Puregym max peak occupancy target = 186 persons
 Calculated using Puregym Fire Safety Occupancy Levels Forecast Tool

The designed occupancy of the unit as calculated would allow a max. No. of 222 persons, which is larger than the total estimated occupancy target of 186 persons and is therefore thought to meet with the Approved Document Part B.

Fire Alarm
 Fire Alarm designed and installed to BS 5839. Smoke & heat detection / emergency lighting by specialist. Please refer to M&E engineer's drawings / specifications.

Escape Lighting
 Emergency escape lighting designed and installed in accordance with BS 5266: Part 1. Please refer to M&E Engineer's drawings for final layout and specification.

Fire Stopping
 Escape Signage and emergency lighting is CDP under the M&E specification. Details of contractors proposals to be provided to Building Control Approved Inspector and Fire Officer within the Contractors Proposals Package, Clause 1.4

Rev	Date	Description	Drawn/ Checked
PROJECT TITLE		DRAWING TITLE	
Keighley Alston Retail Park, Bradford Rd, BD21 4AG		Fire Evacuation Plan Ground Floor Plan	
DRAWN/ CHECKED		DATE	DRAWING PURPOSE
HJKL		25.11.24	C
DRAWING No		SCALE	
2500-GF-003-FEP-C00		1:100 @ A1	

Pure Gym Ltd
 Town Centre House
 The Marston Centre
 Leeds
 LS2 8LY
 e: architecture@puregym.com
 w: www.puregym.com